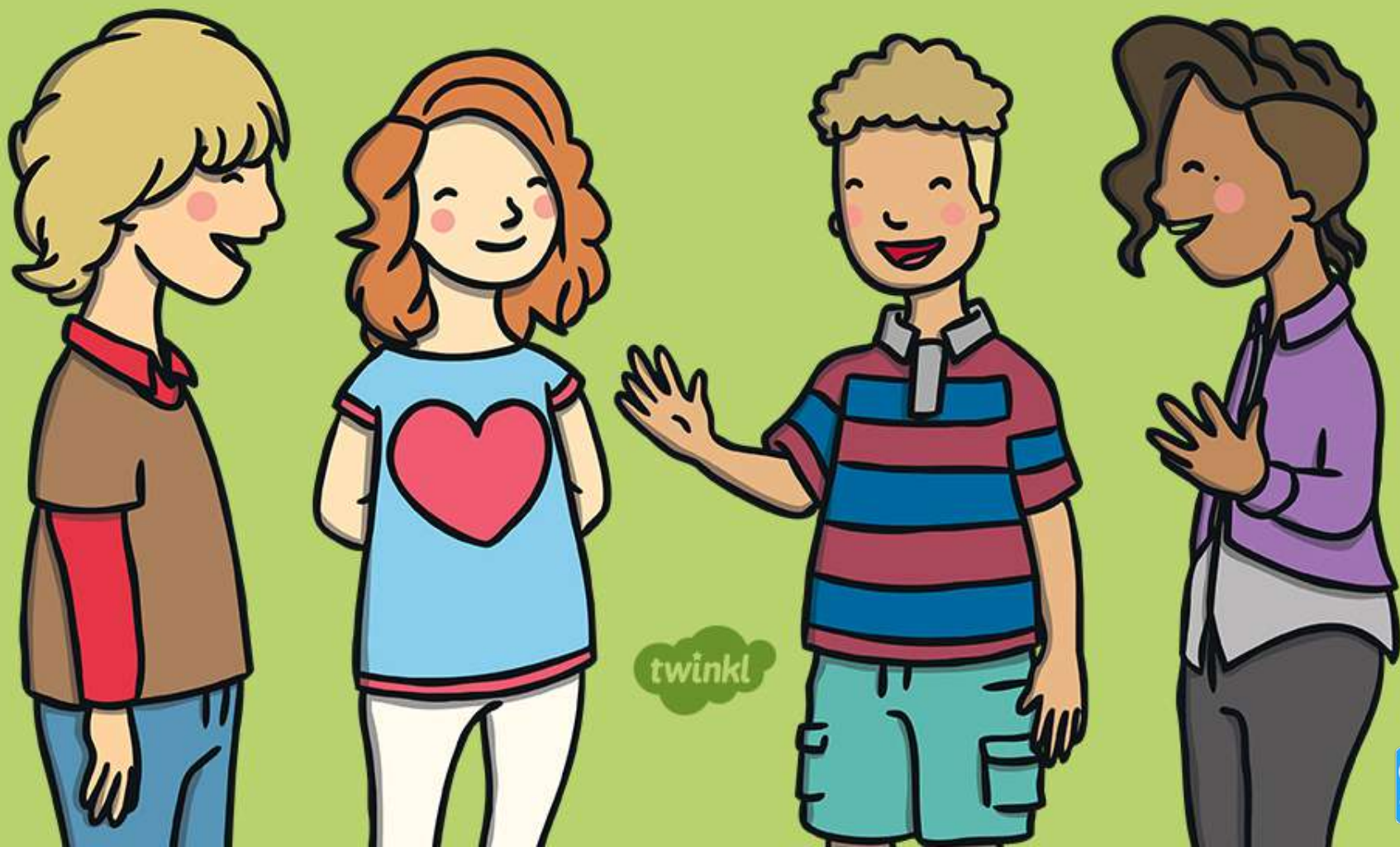
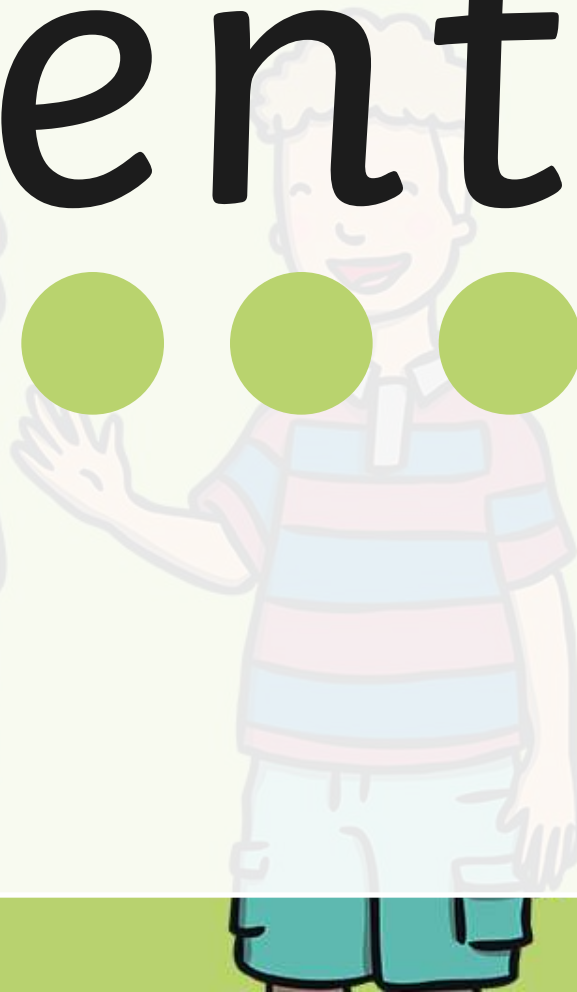


Phase 4 Sound Button



went



it's



help



just



tent



belt



hump



band



dent



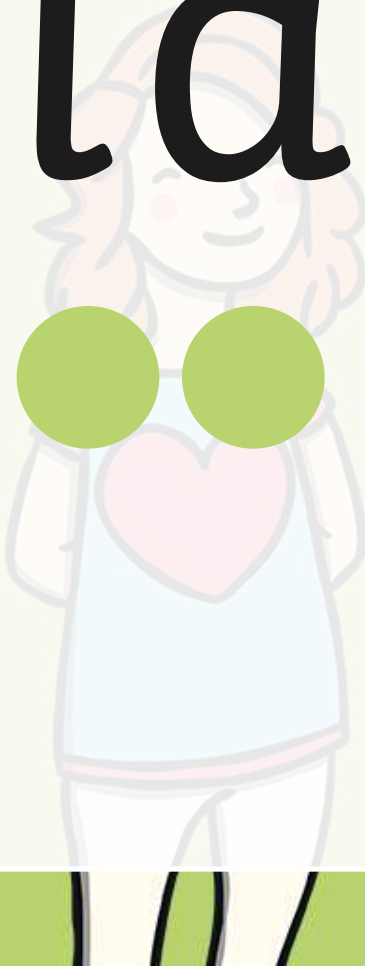
felt



gulp



l a m p



wind



land



nest



sink



link



hunt



best



tilt



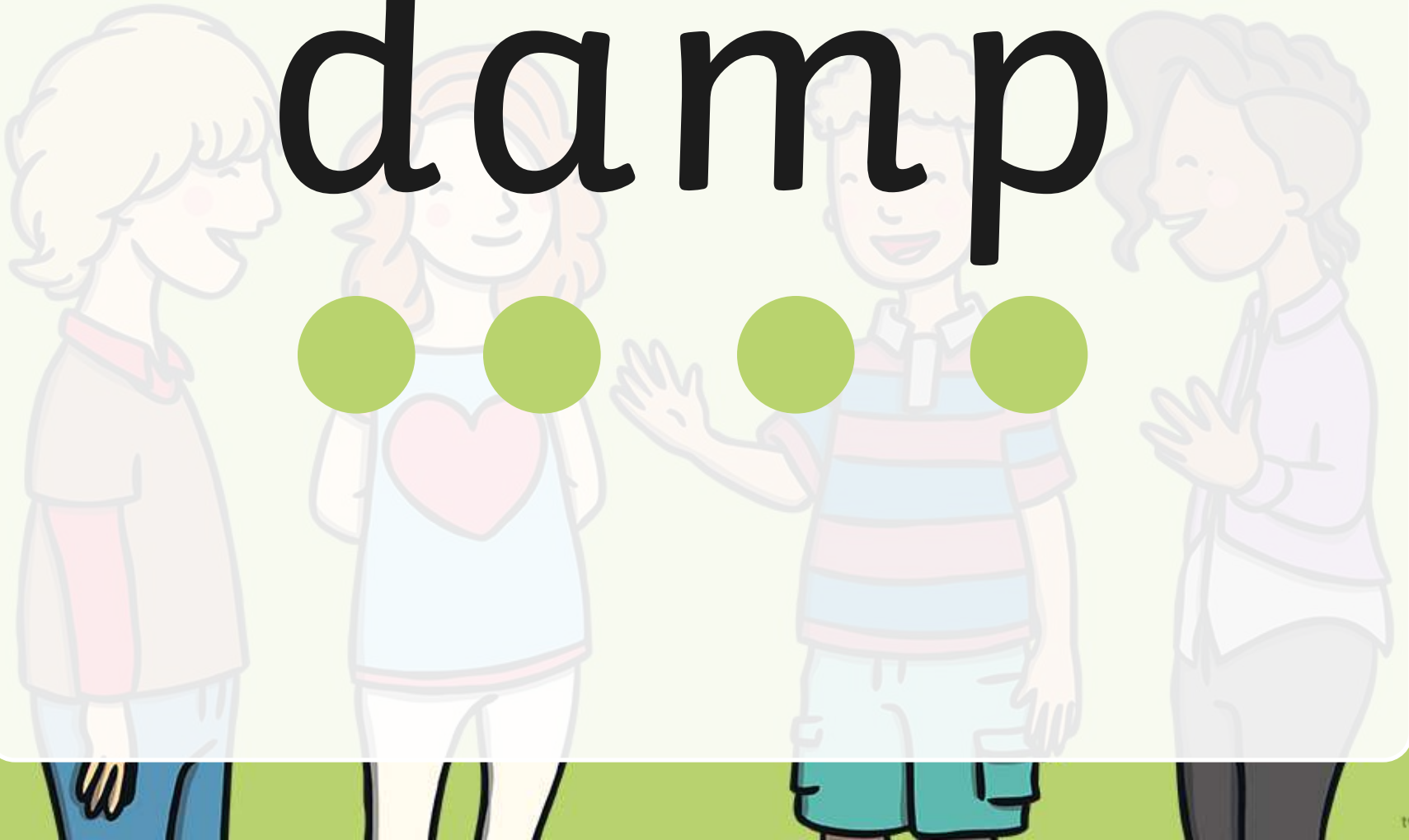
lost



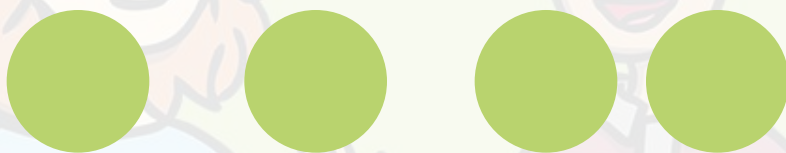
tuft



d a m p



bust



camp



gift



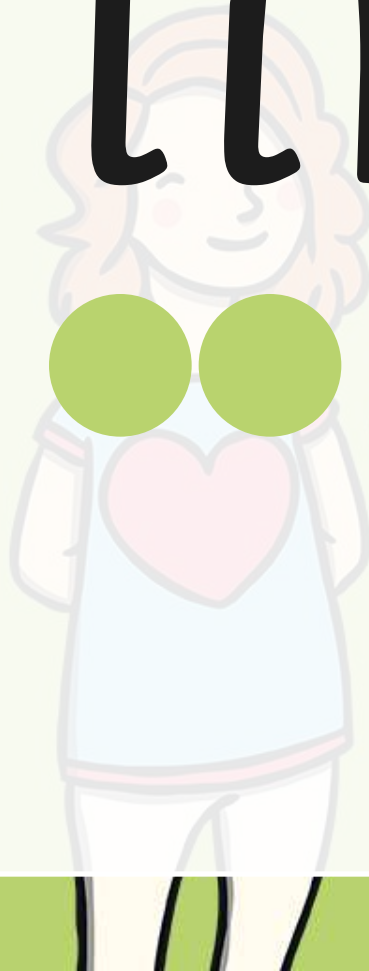
kept



tusk



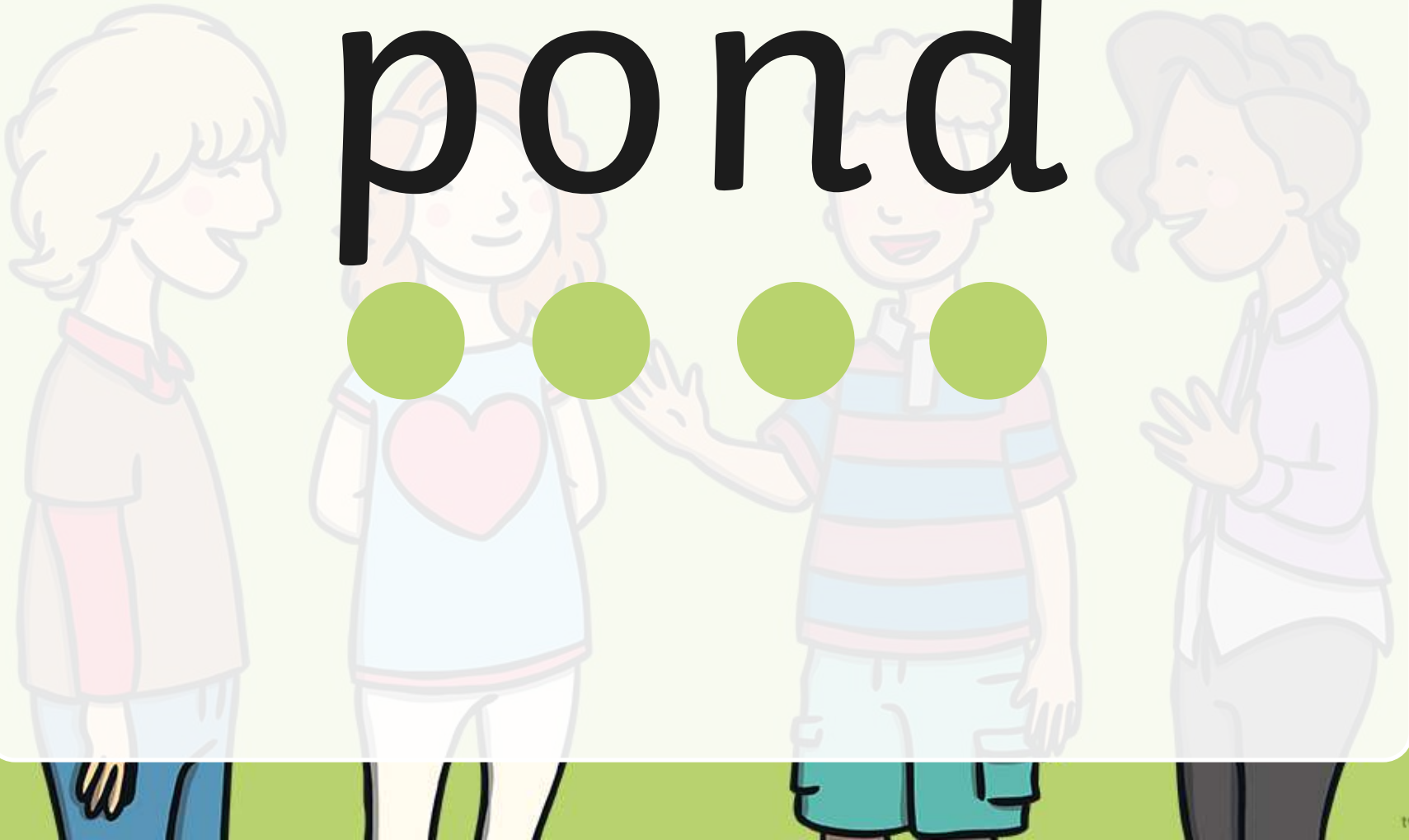
limp



soft



pond



h u s k



cost



bank



bunk



fond



gust



hand



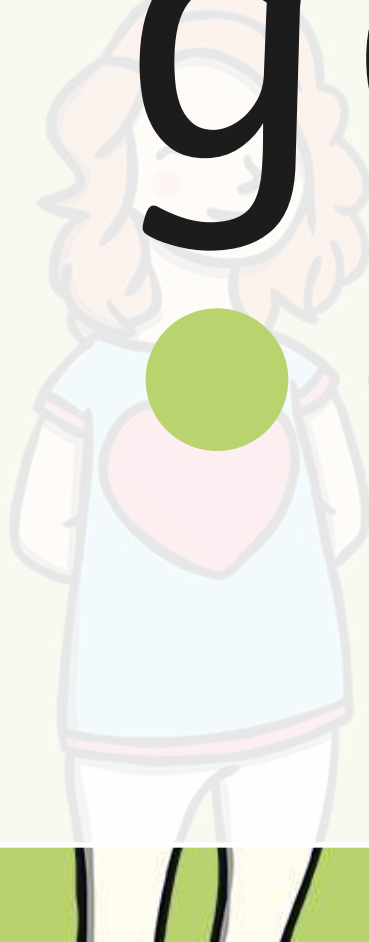
next



milk



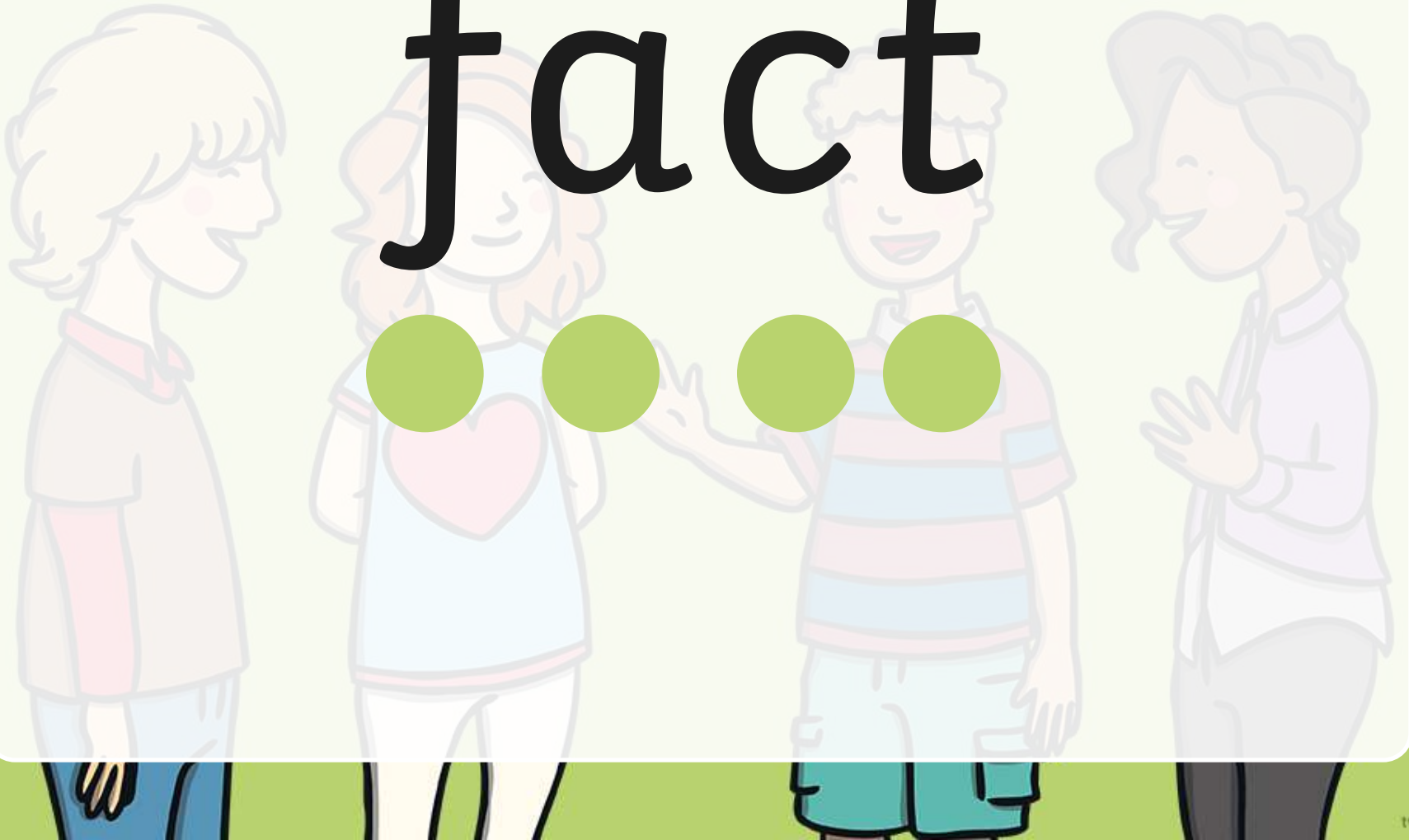
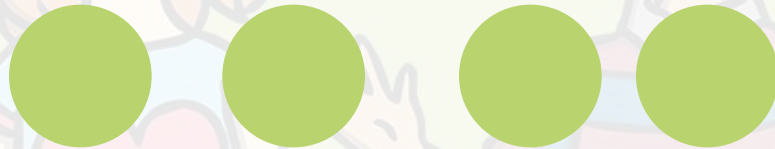
g o l f



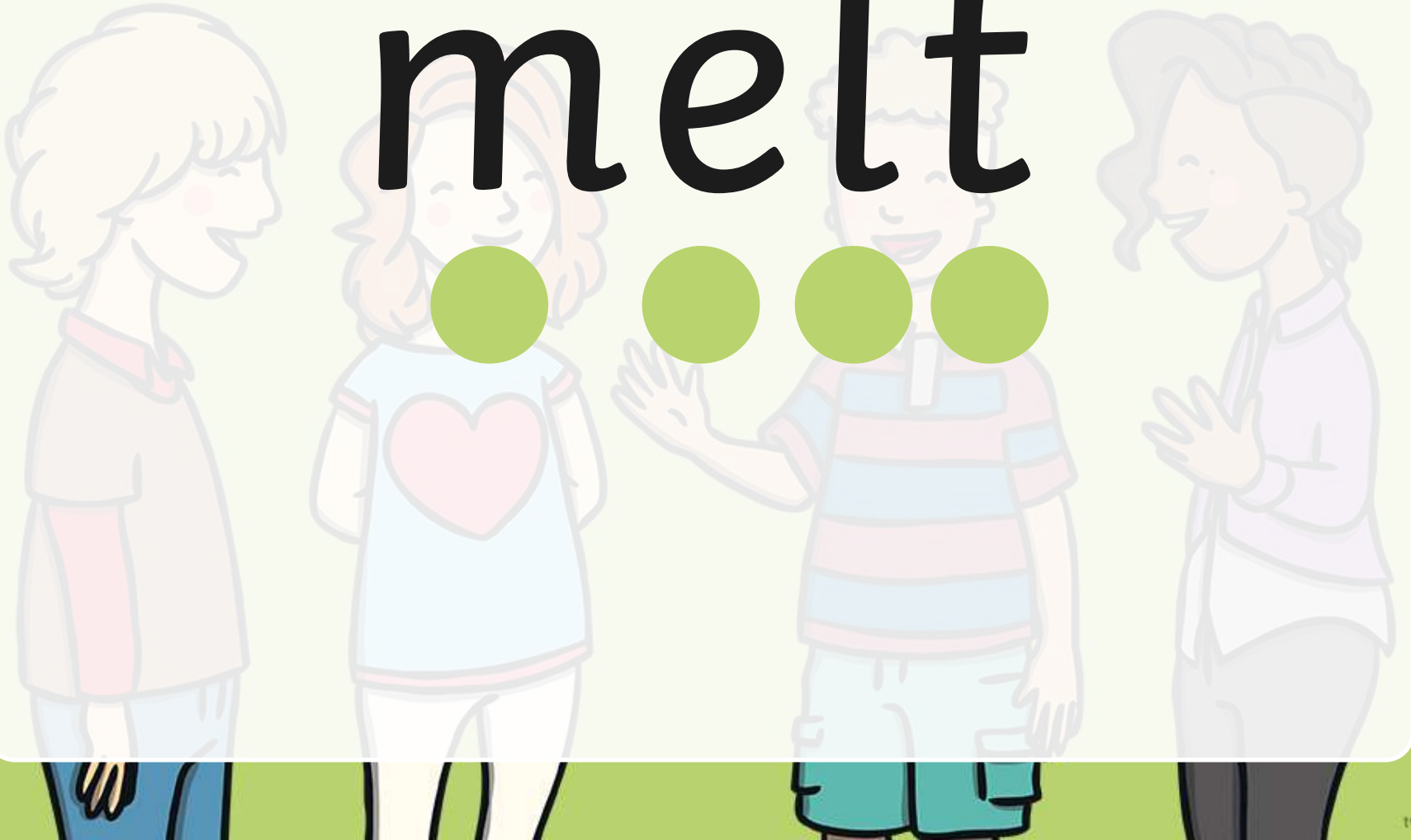
jump



fact



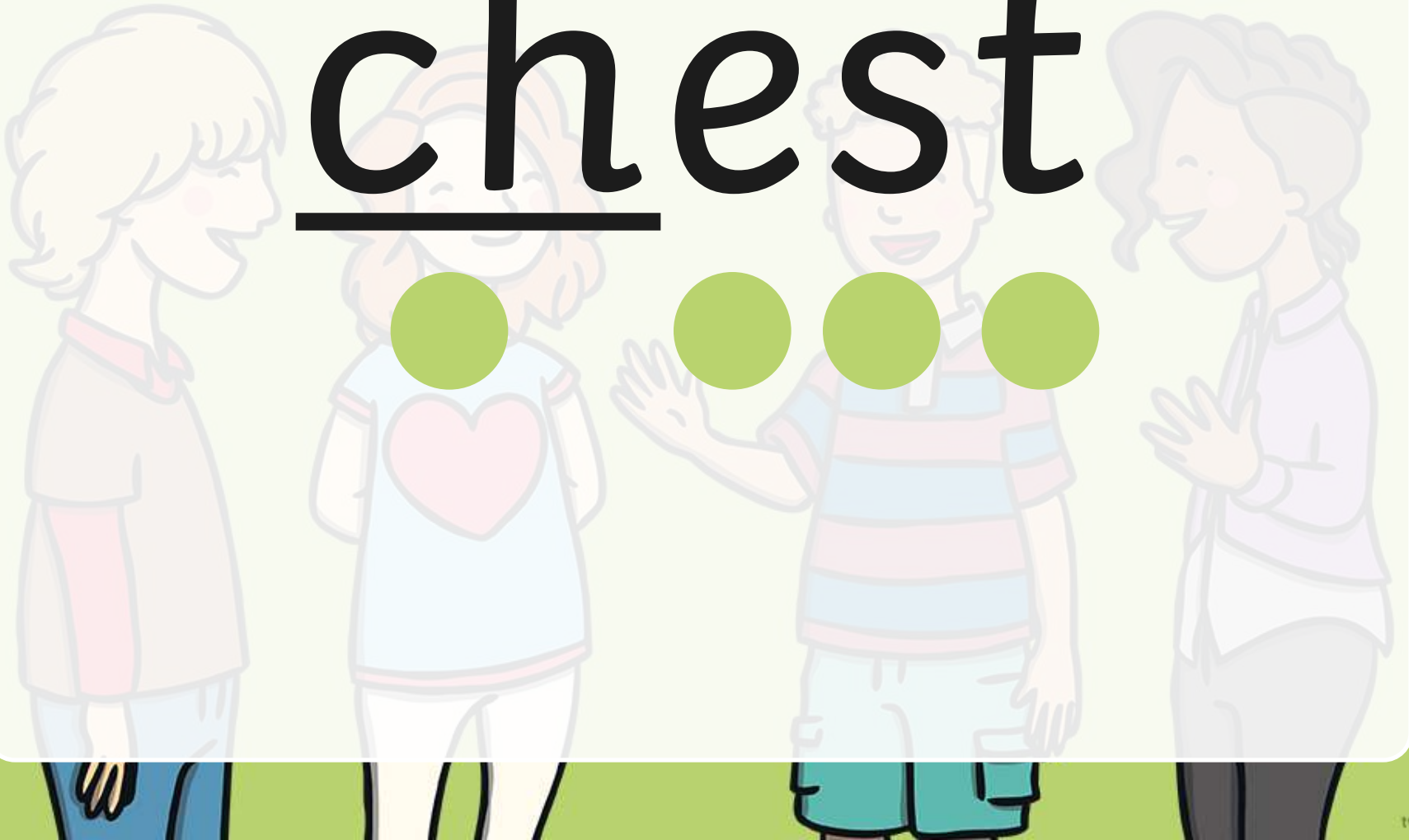
melt



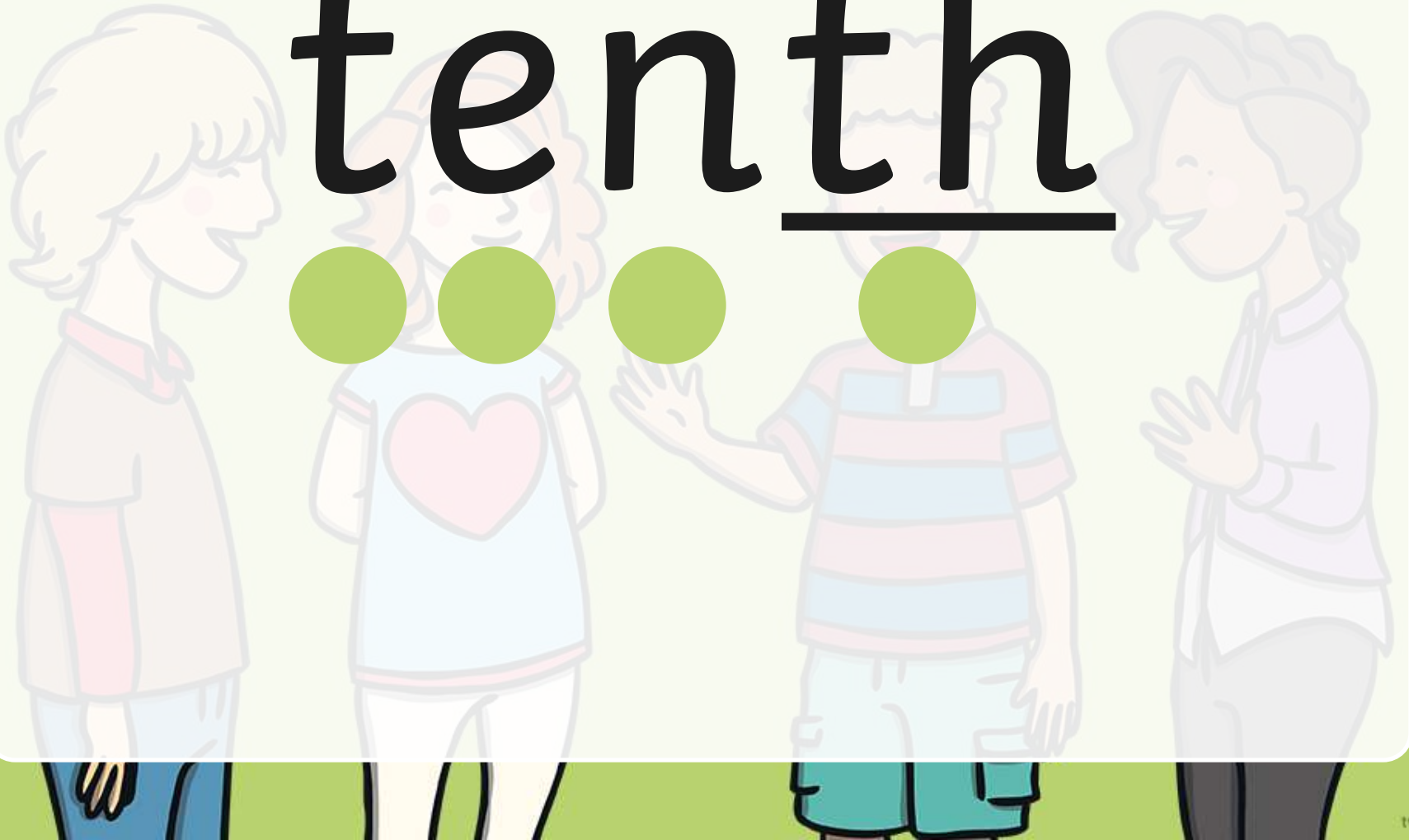
champ



chest



tenth



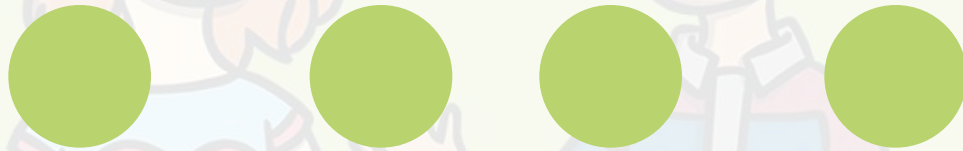
theft



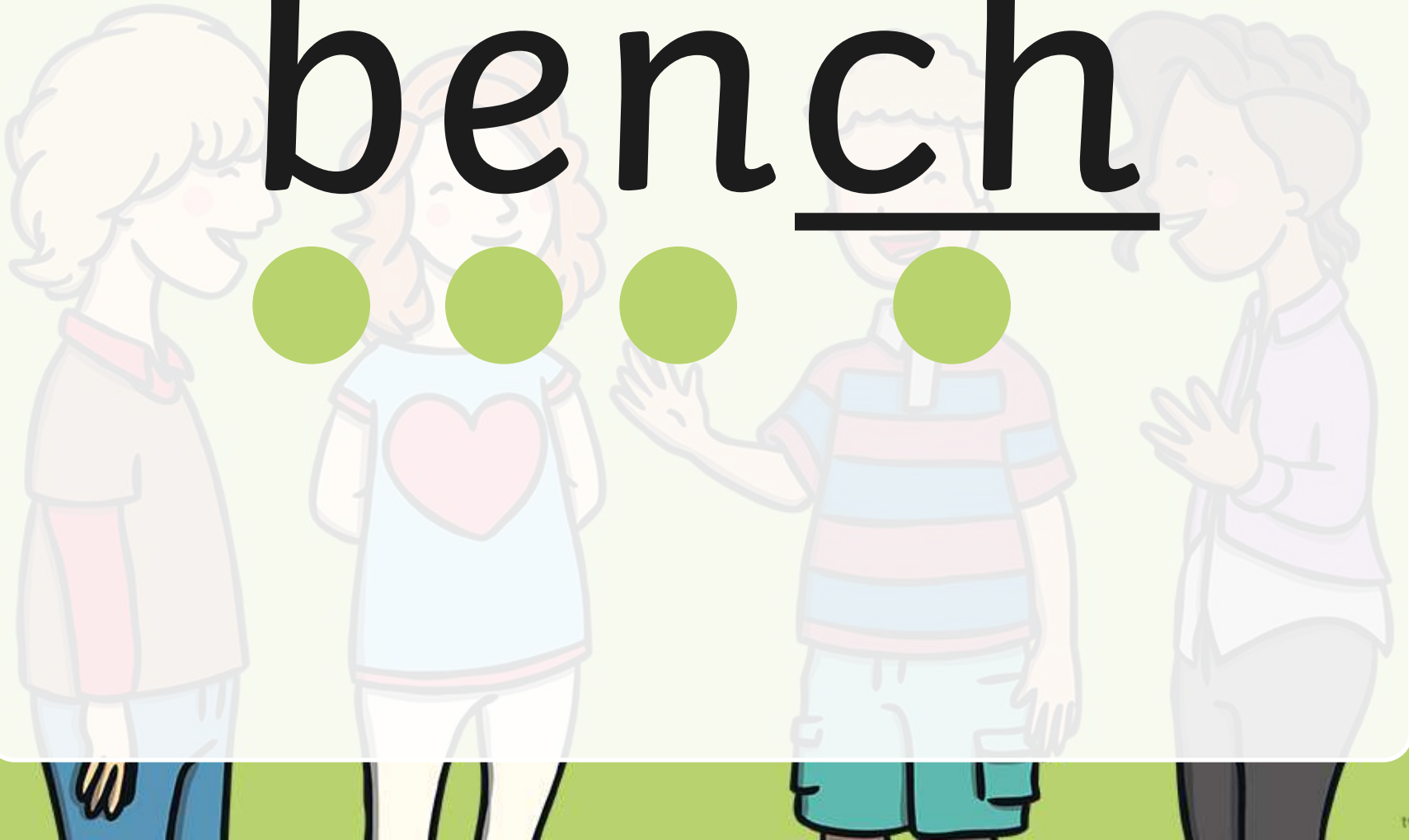
welsh



chimp



bench



sixth



punch



shrimp



thank



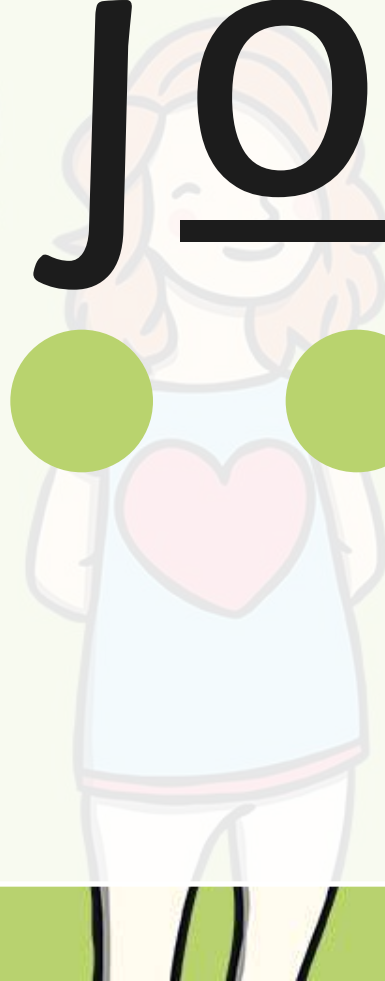
shift



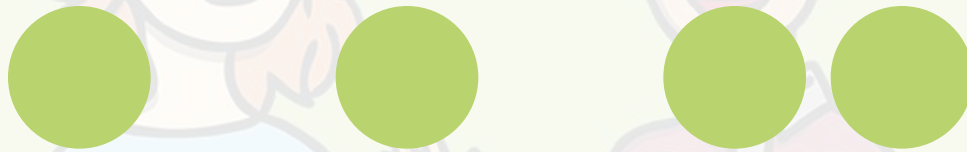
shelf



joint



boost



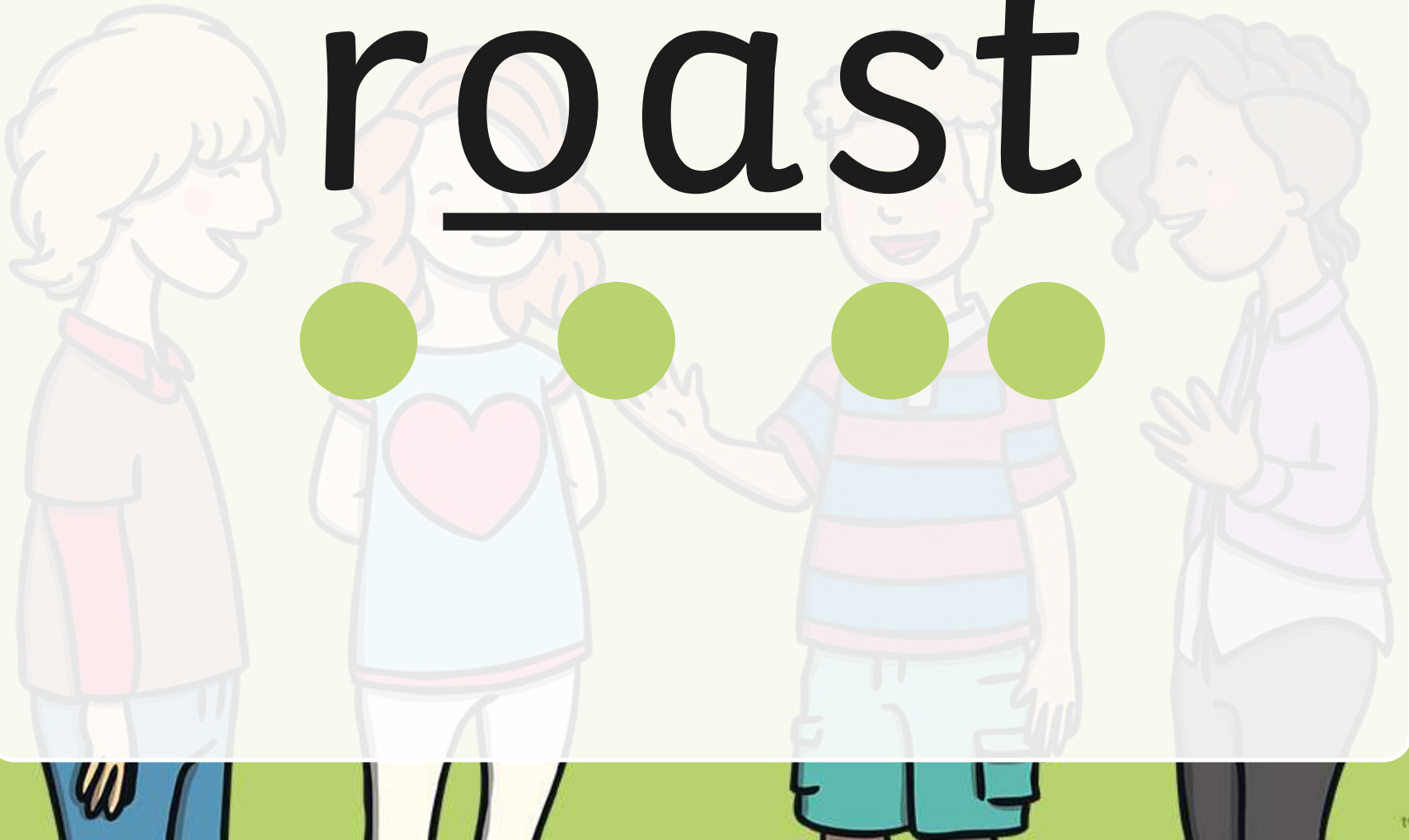
t h u m p



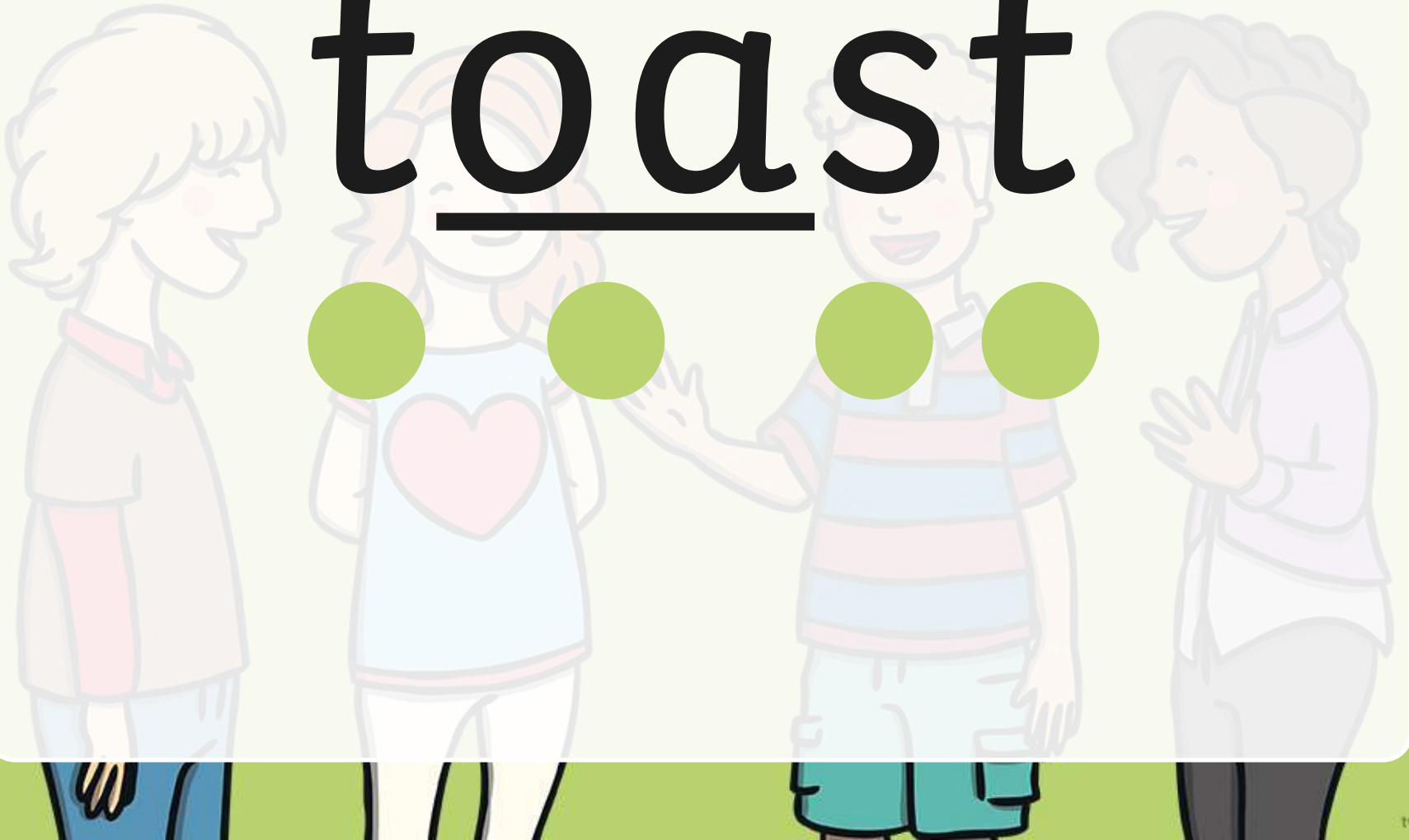
paint



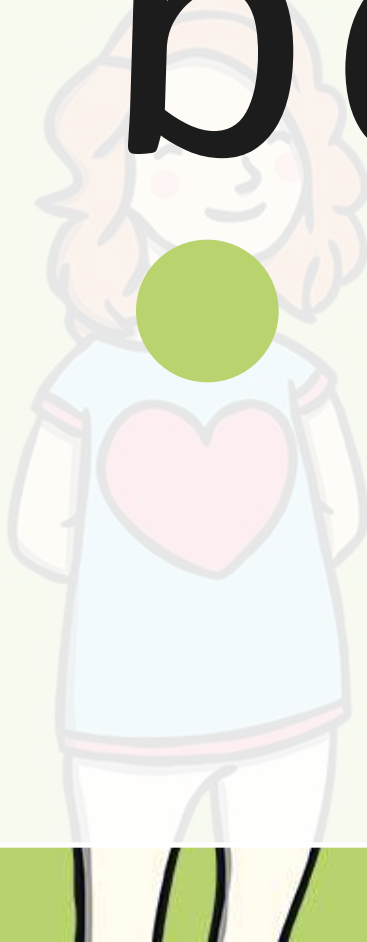
roast



toast



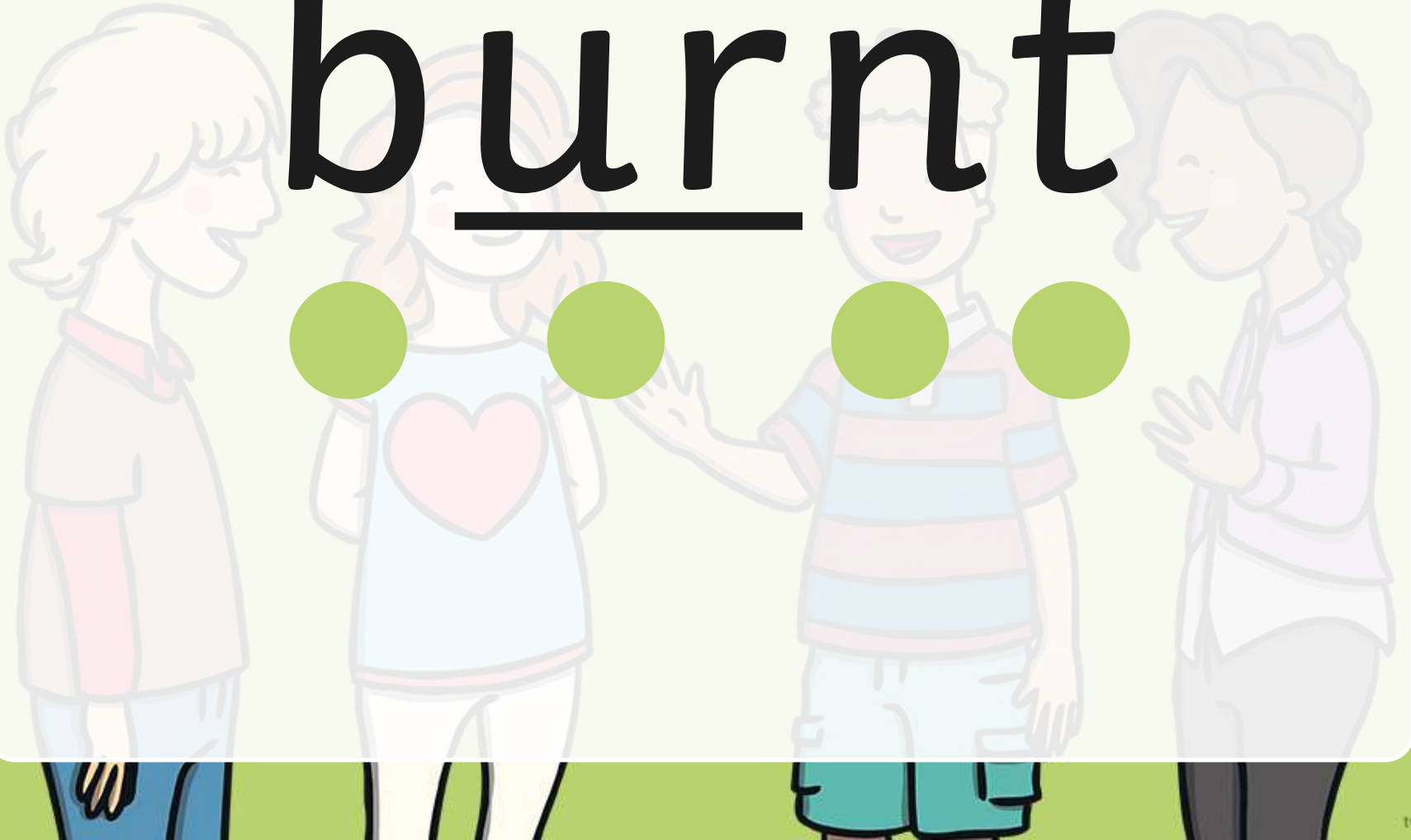
best



think



burnt



children



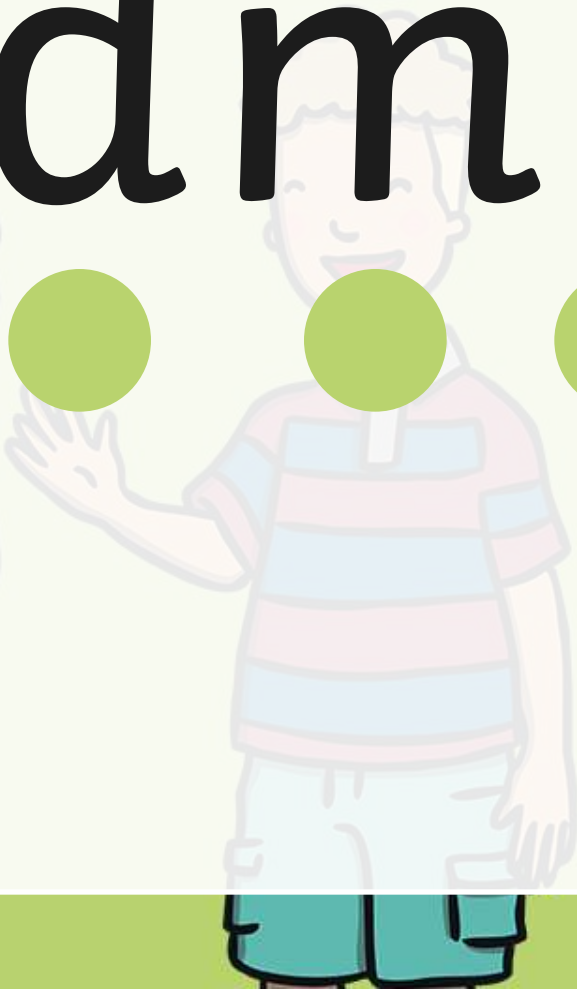
helpdesk



s a n d p i t



windmill



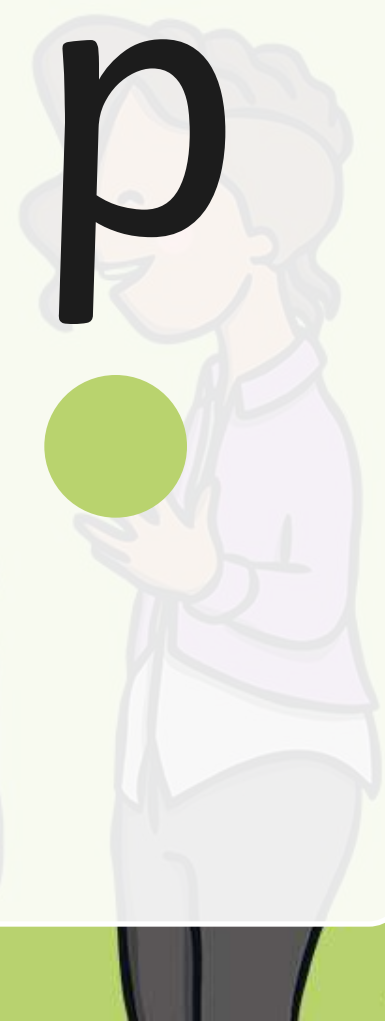
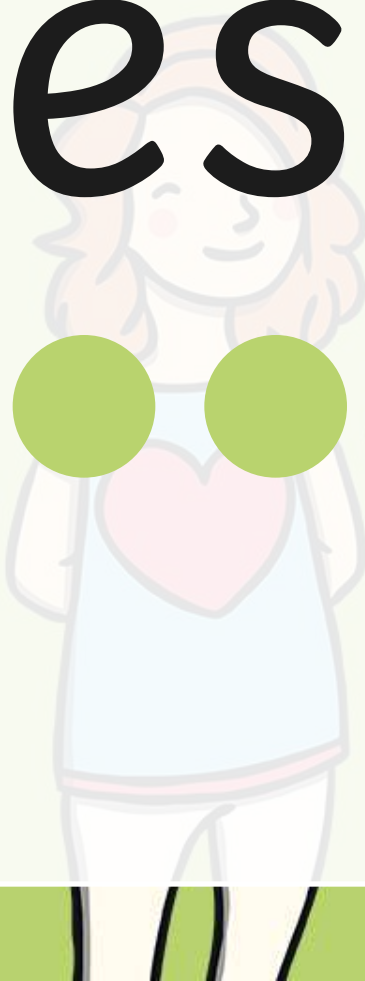
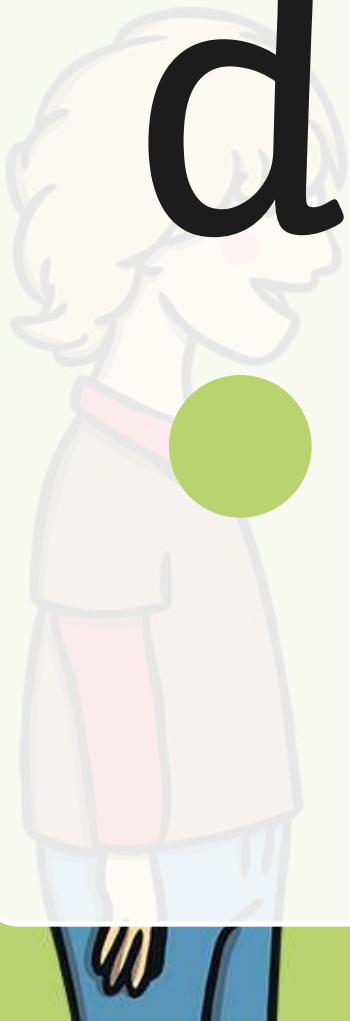
softest



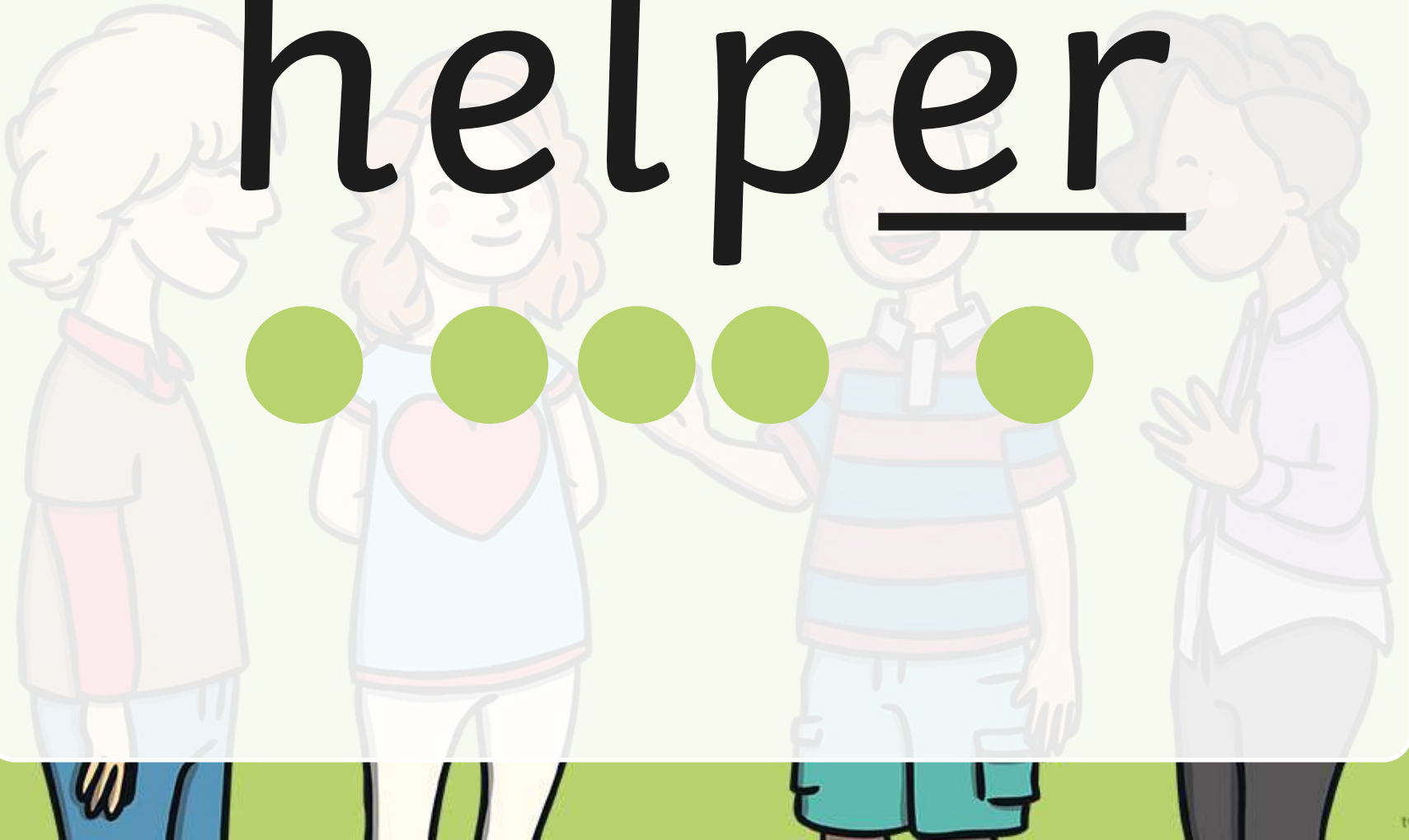
pondweed



desktop



helper



handstand



melting



seventh



shampoo



Chesterr



giftbox



shelterr



lunchbox



sandwich



shelving



Manchester



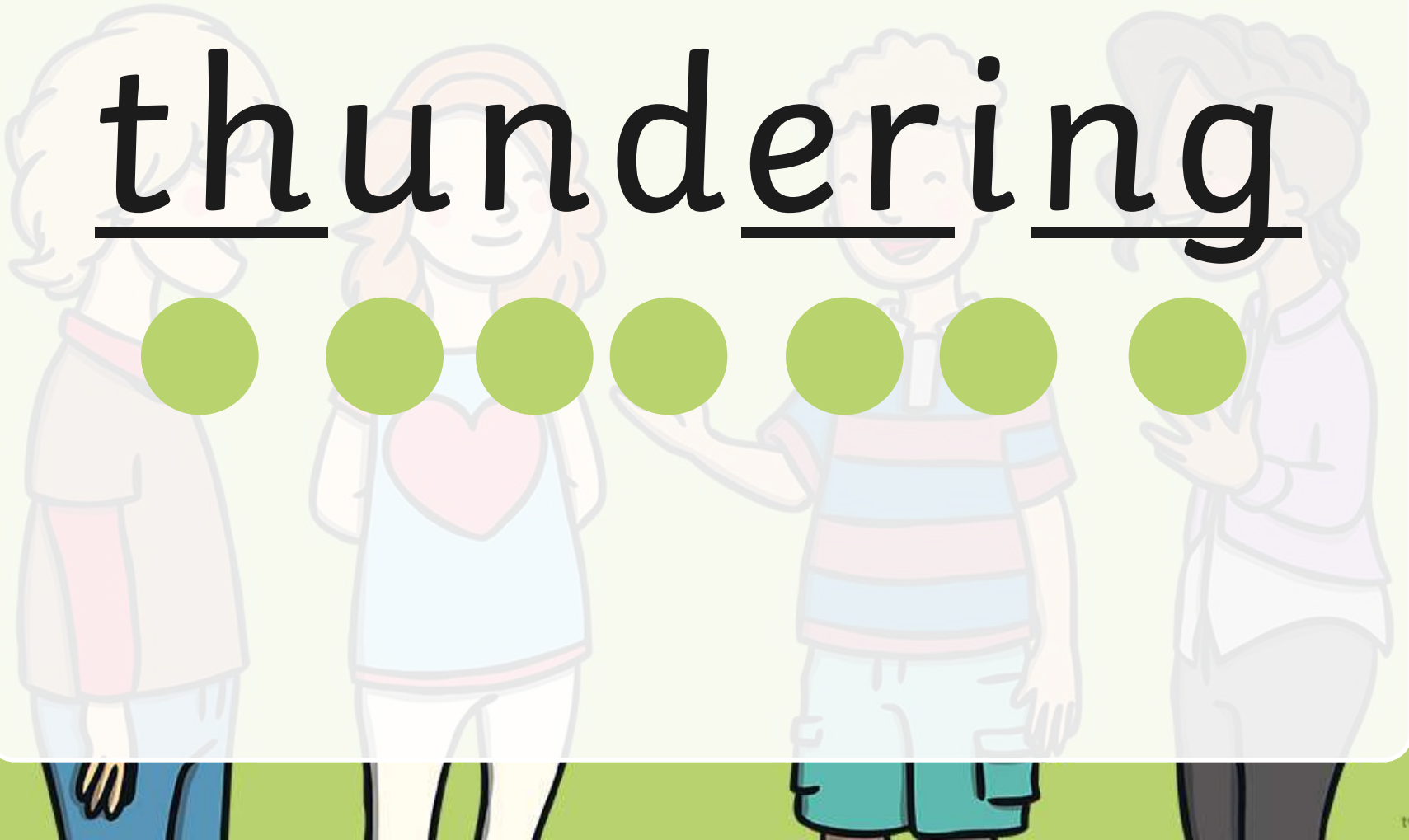
chimpanzeeee



champ



thundering



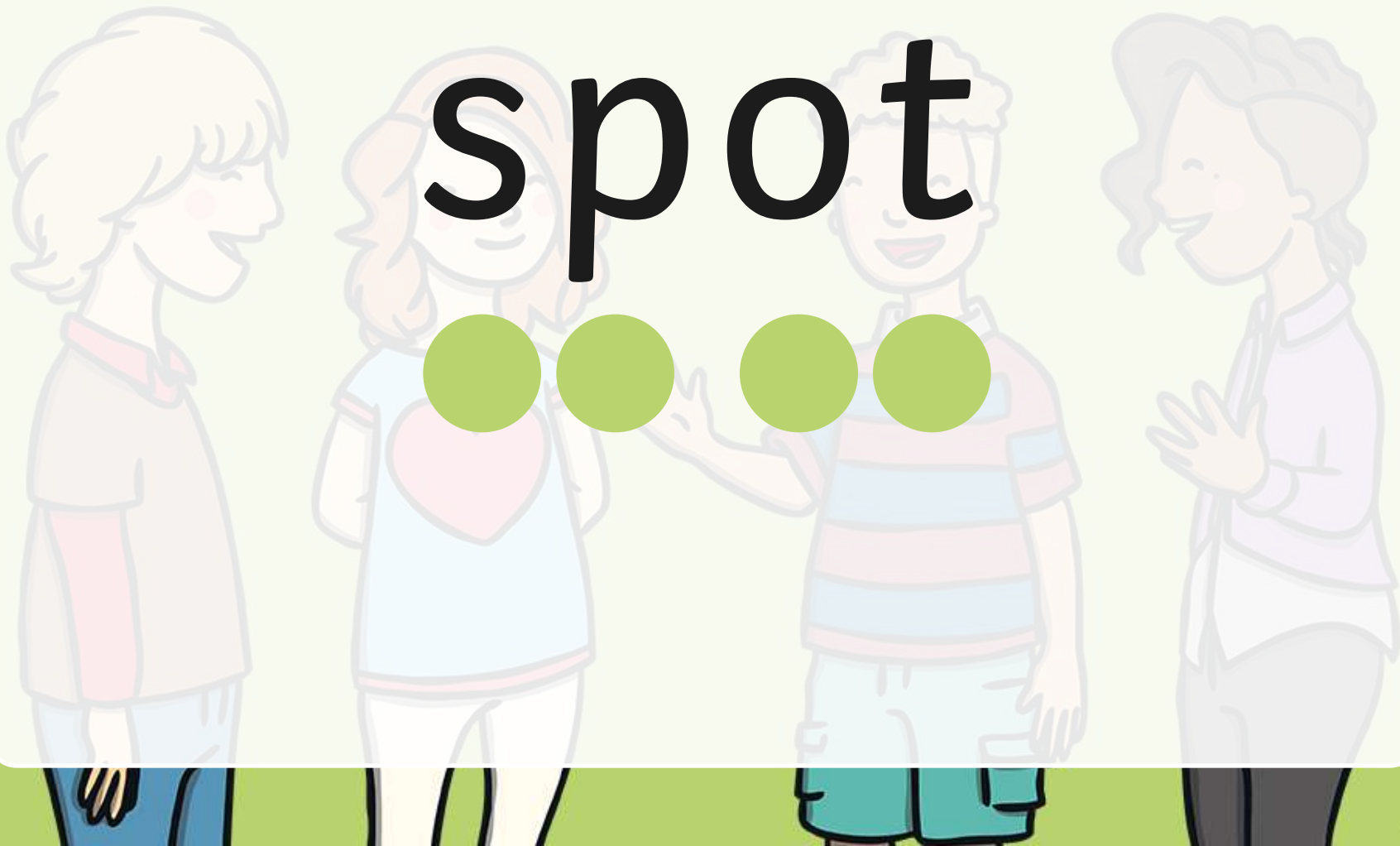
from



stop



spot



frog



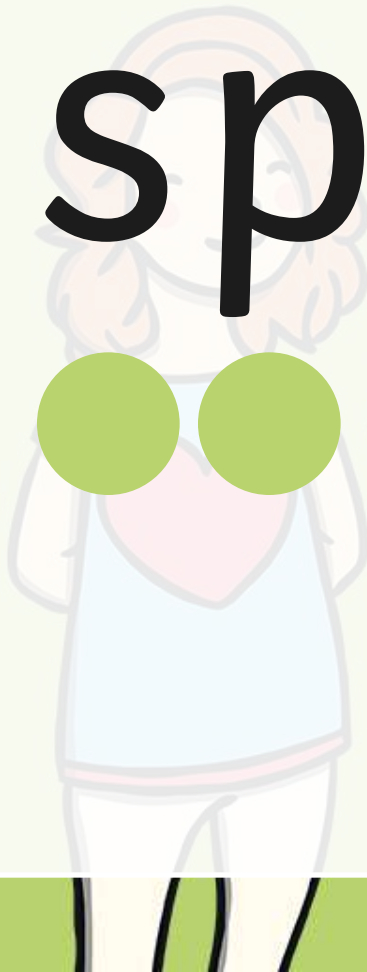
step



plan



speck



trip



g r a b



track



spin



flag



grip



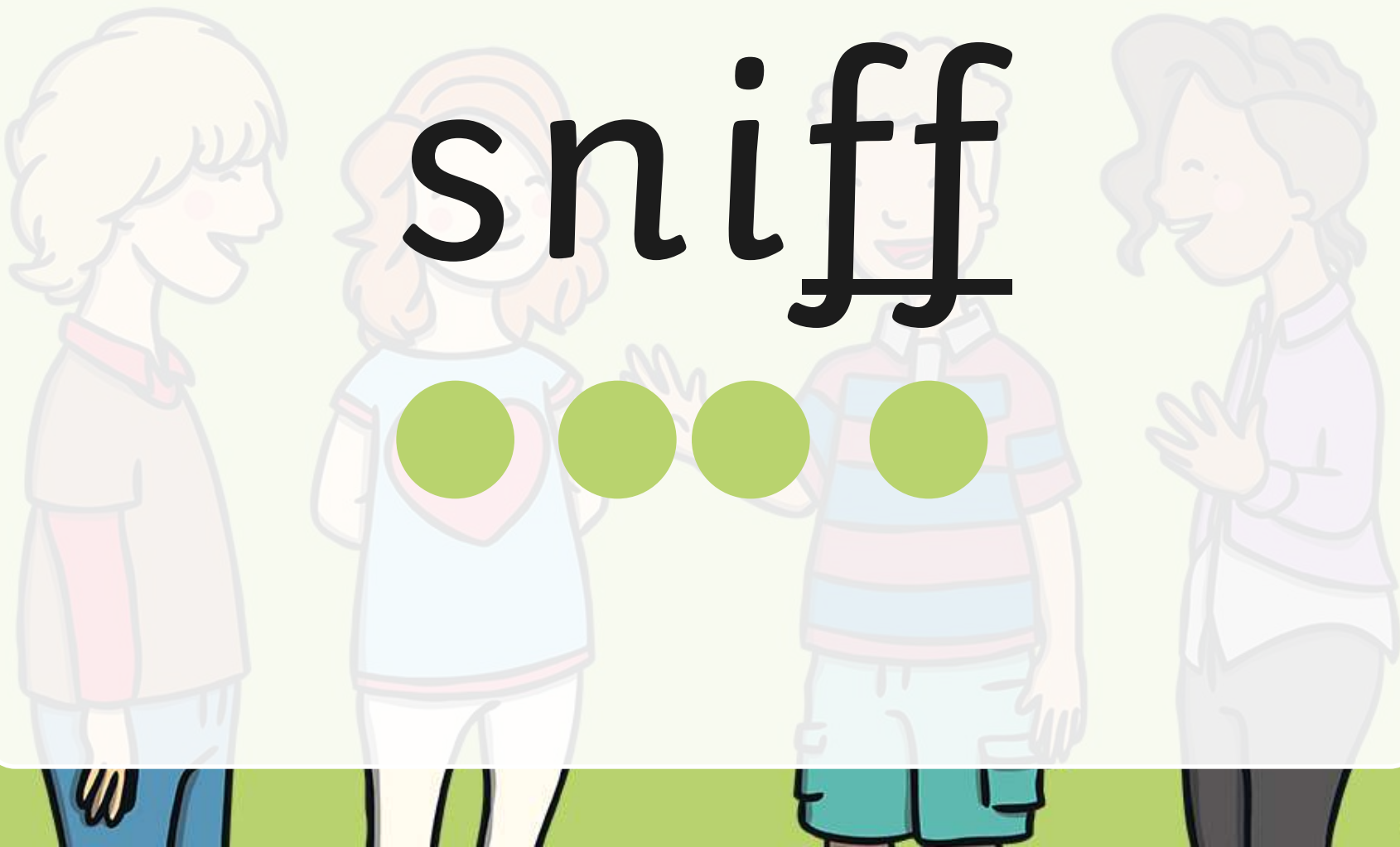
glad



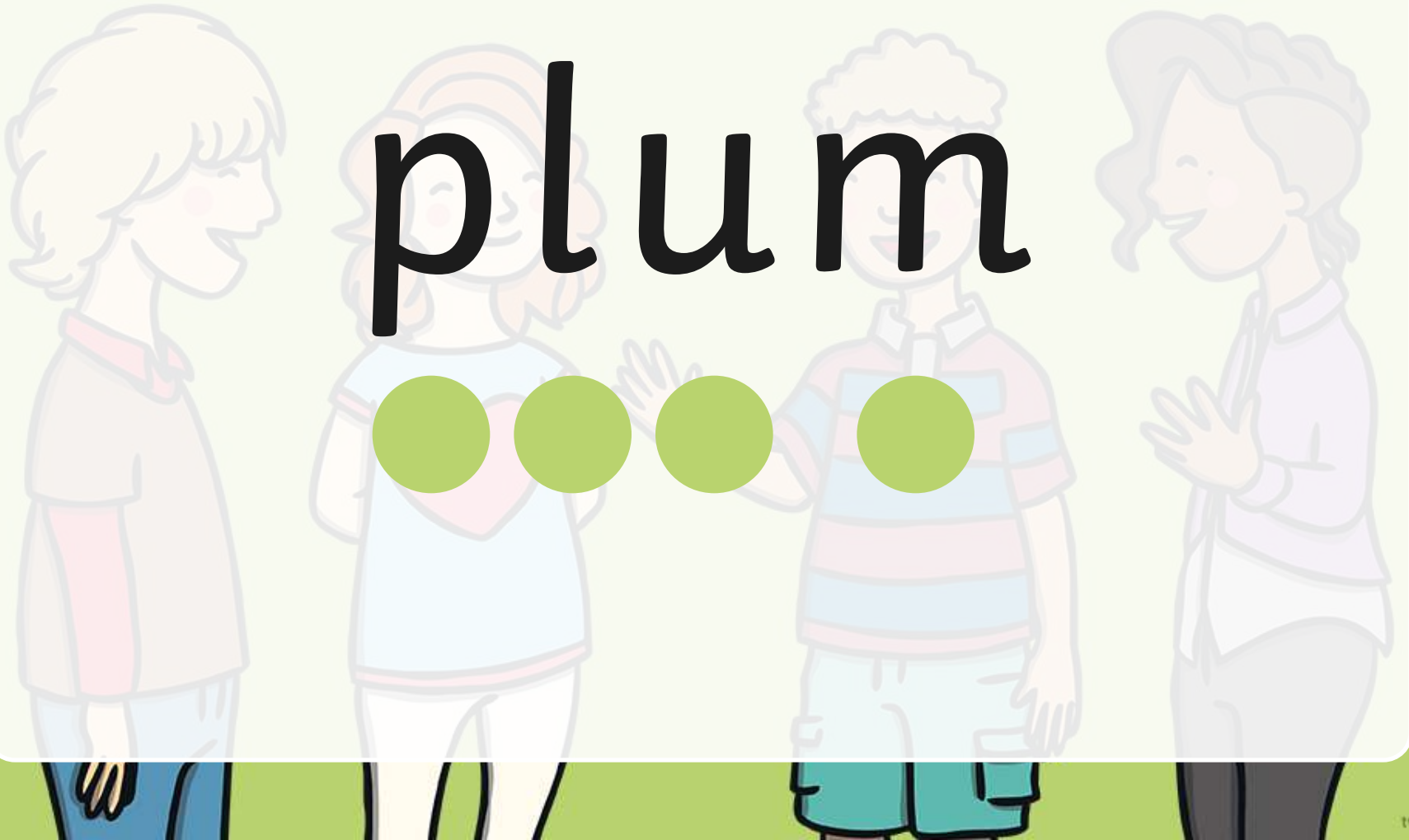
twin



sniff



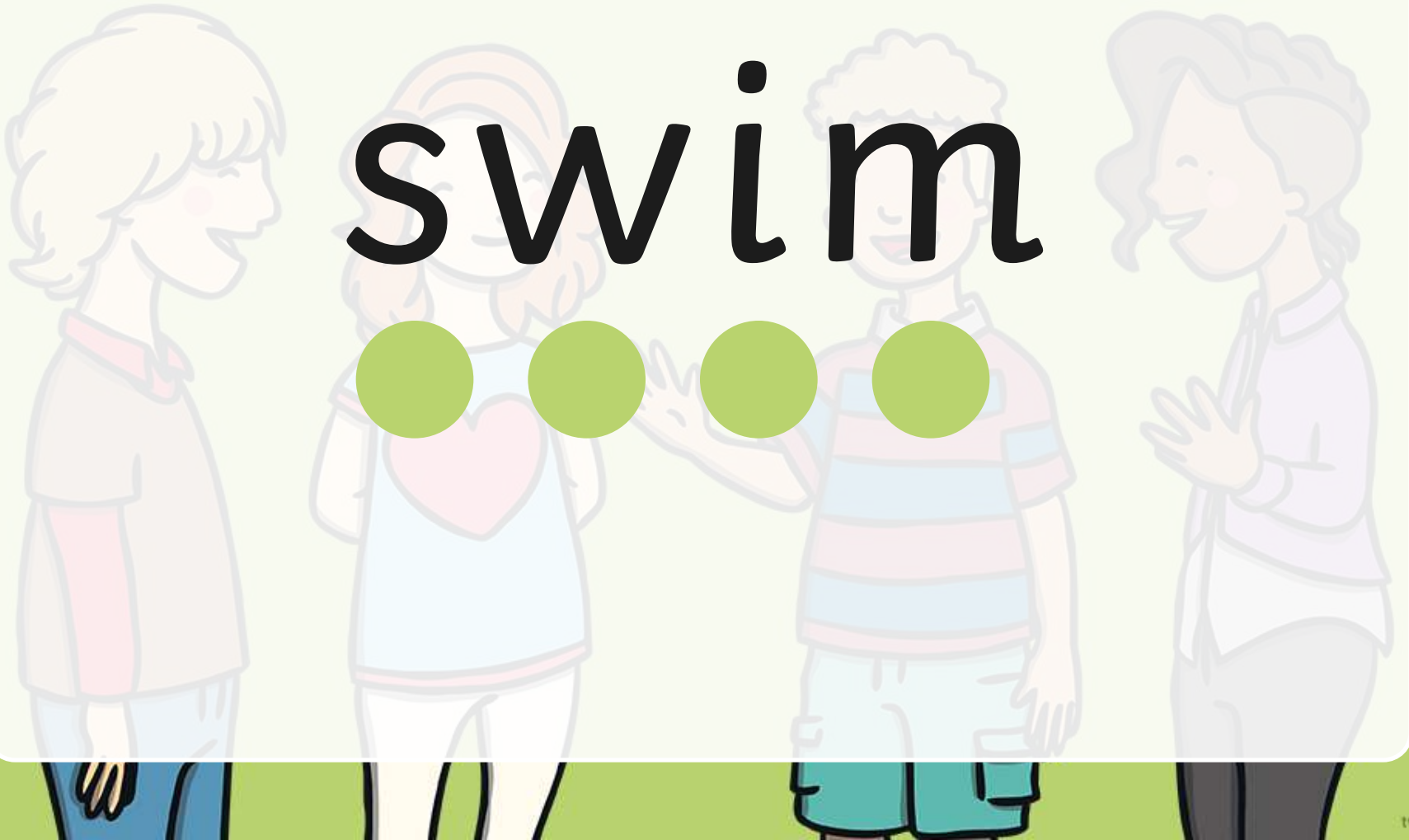
plum



gran



swim



clap



drop



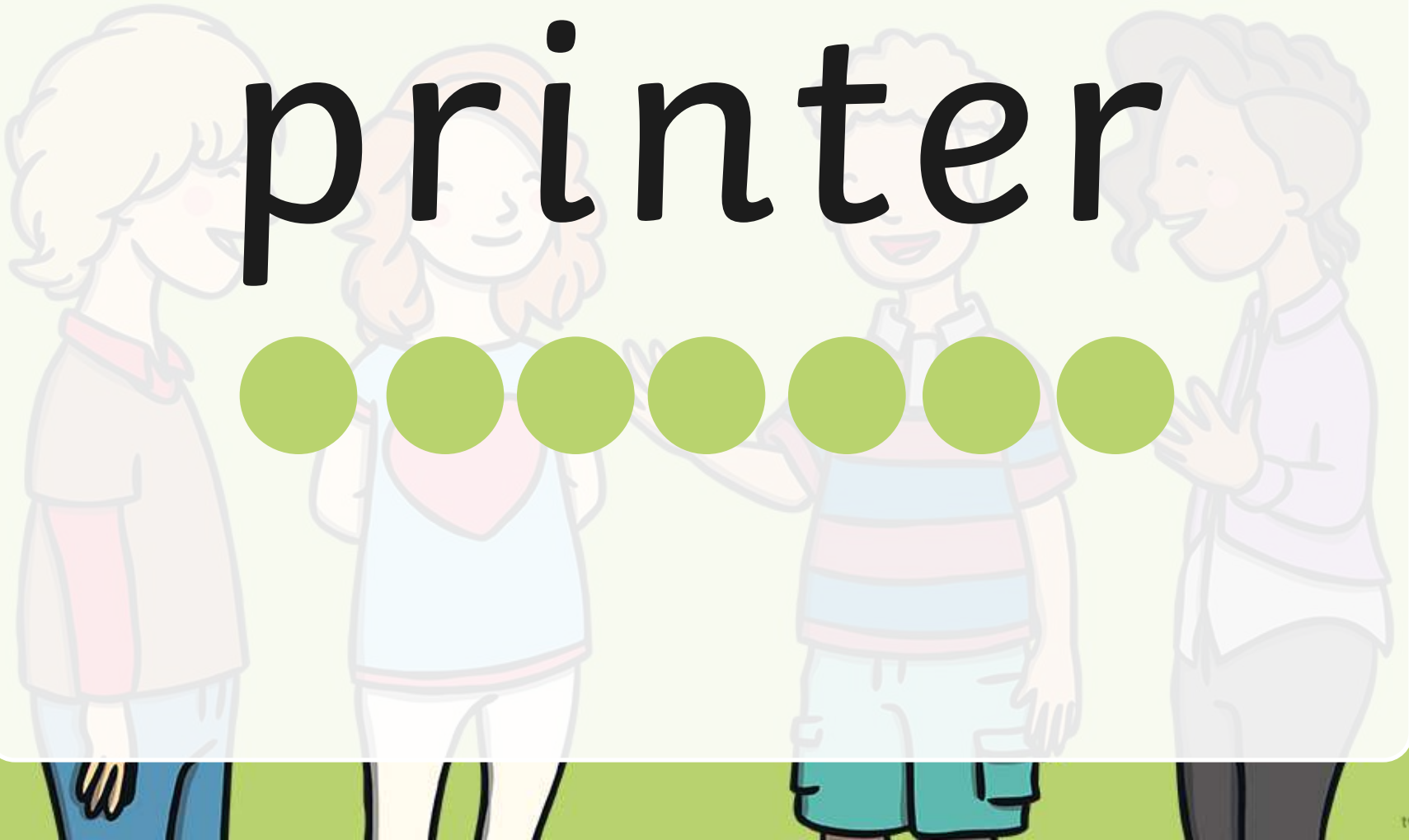
glass



grass



printer



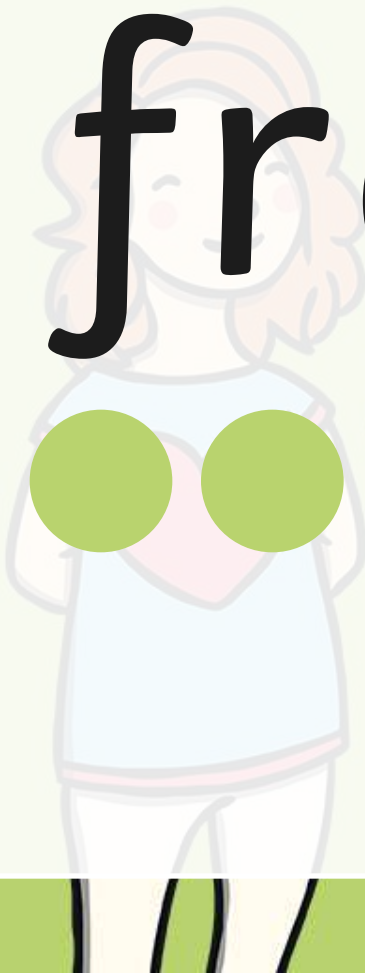
brass



green



fresh



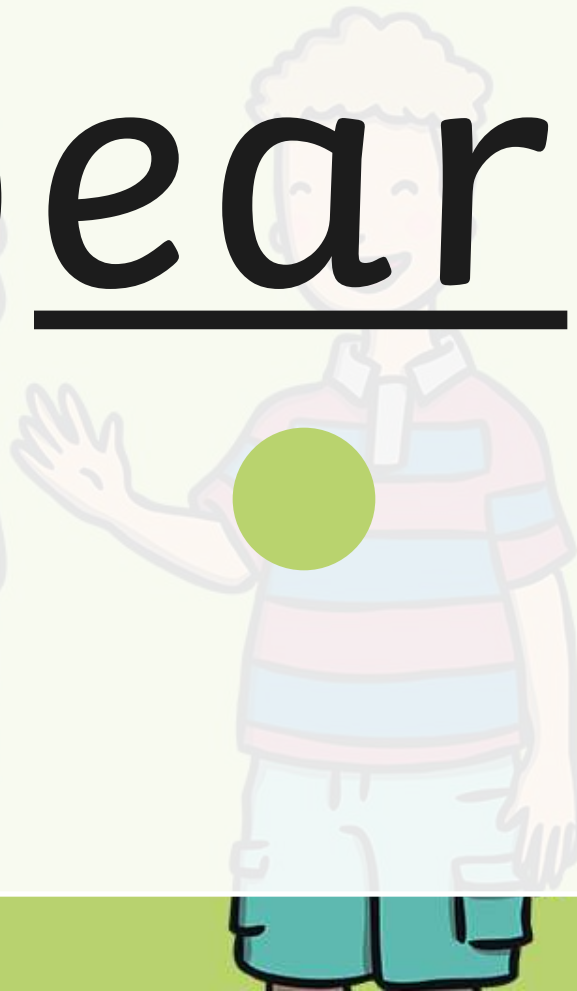
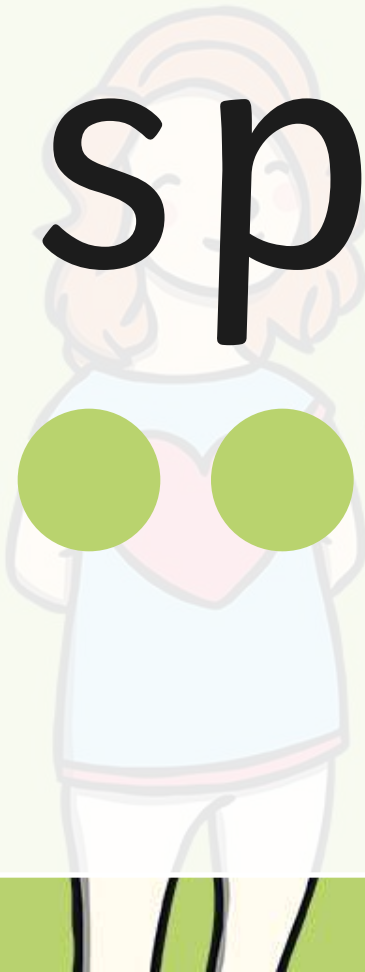
steep



tree



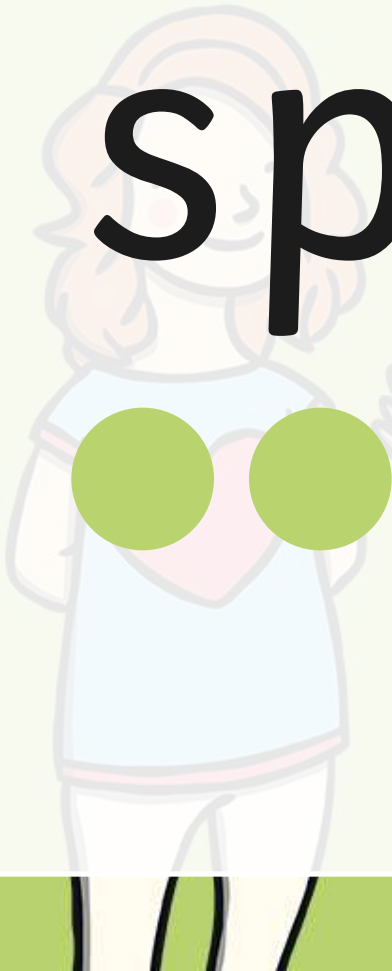
spear



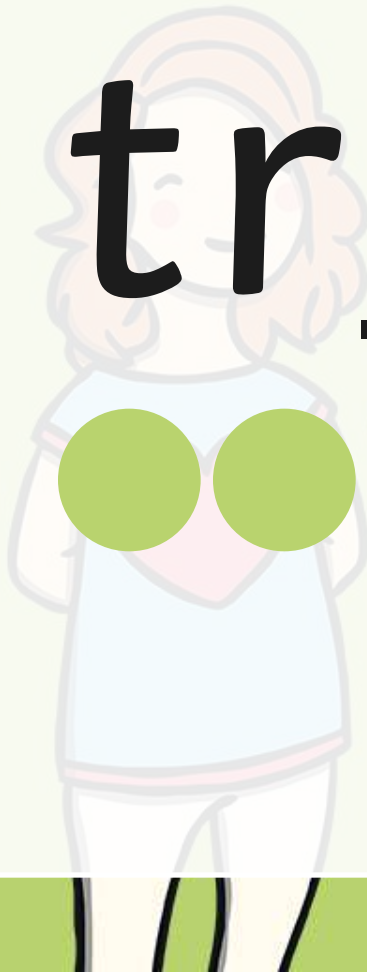
smell



spoil



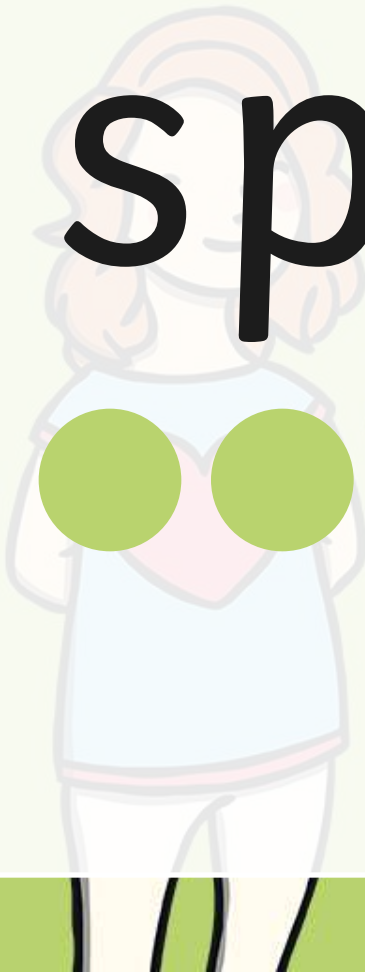
train



spoon



sport



thrush



trash



start



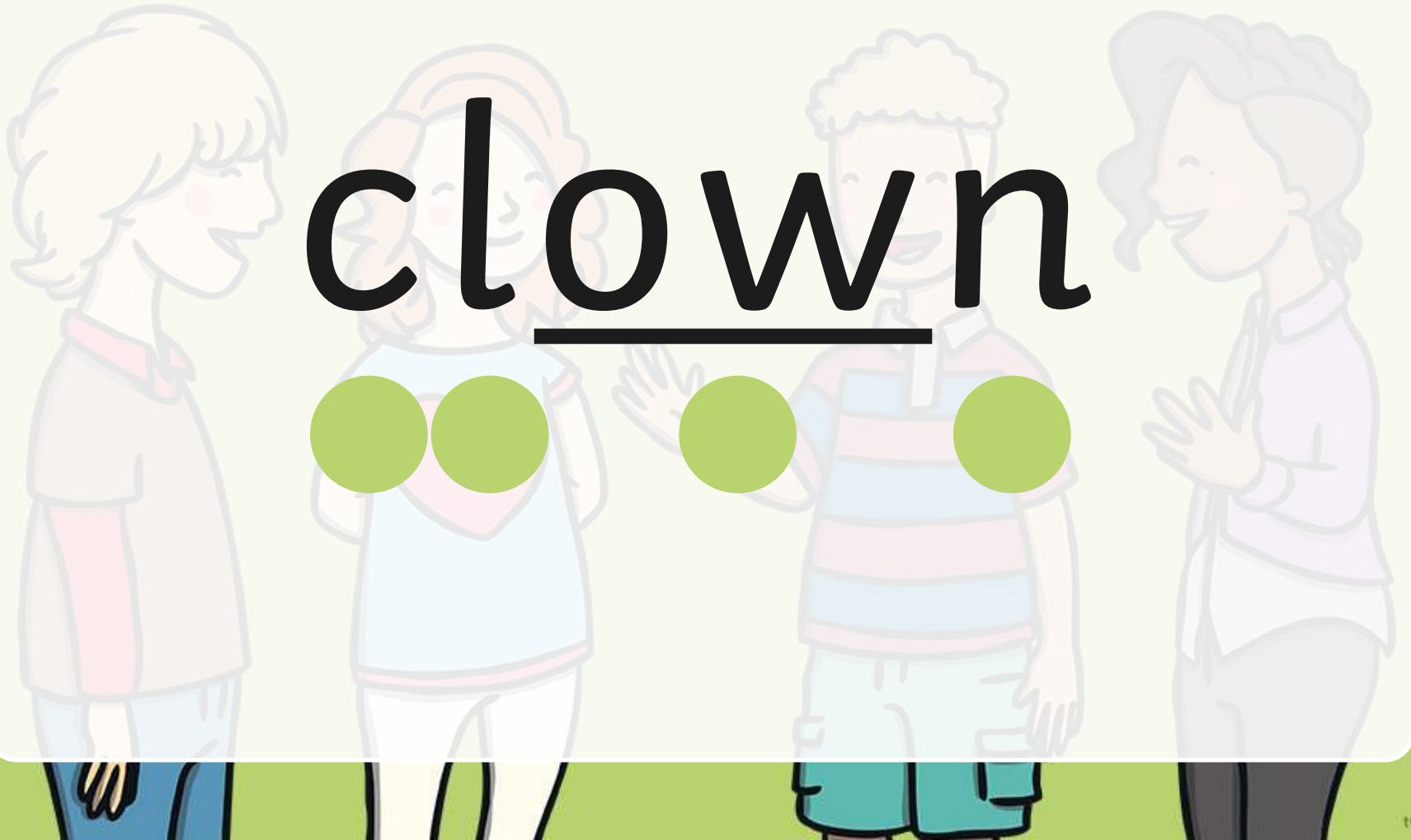
flair



trail



clown



star



creep



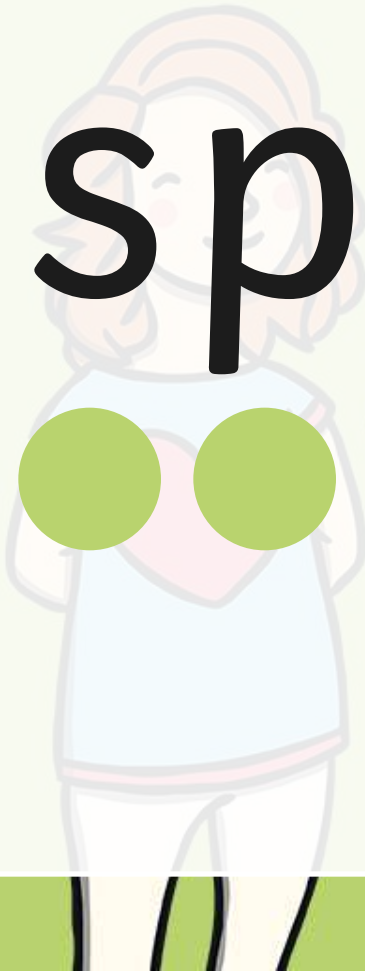
brown



stair



spark



bring



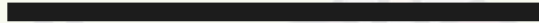
crash



bleed



clear



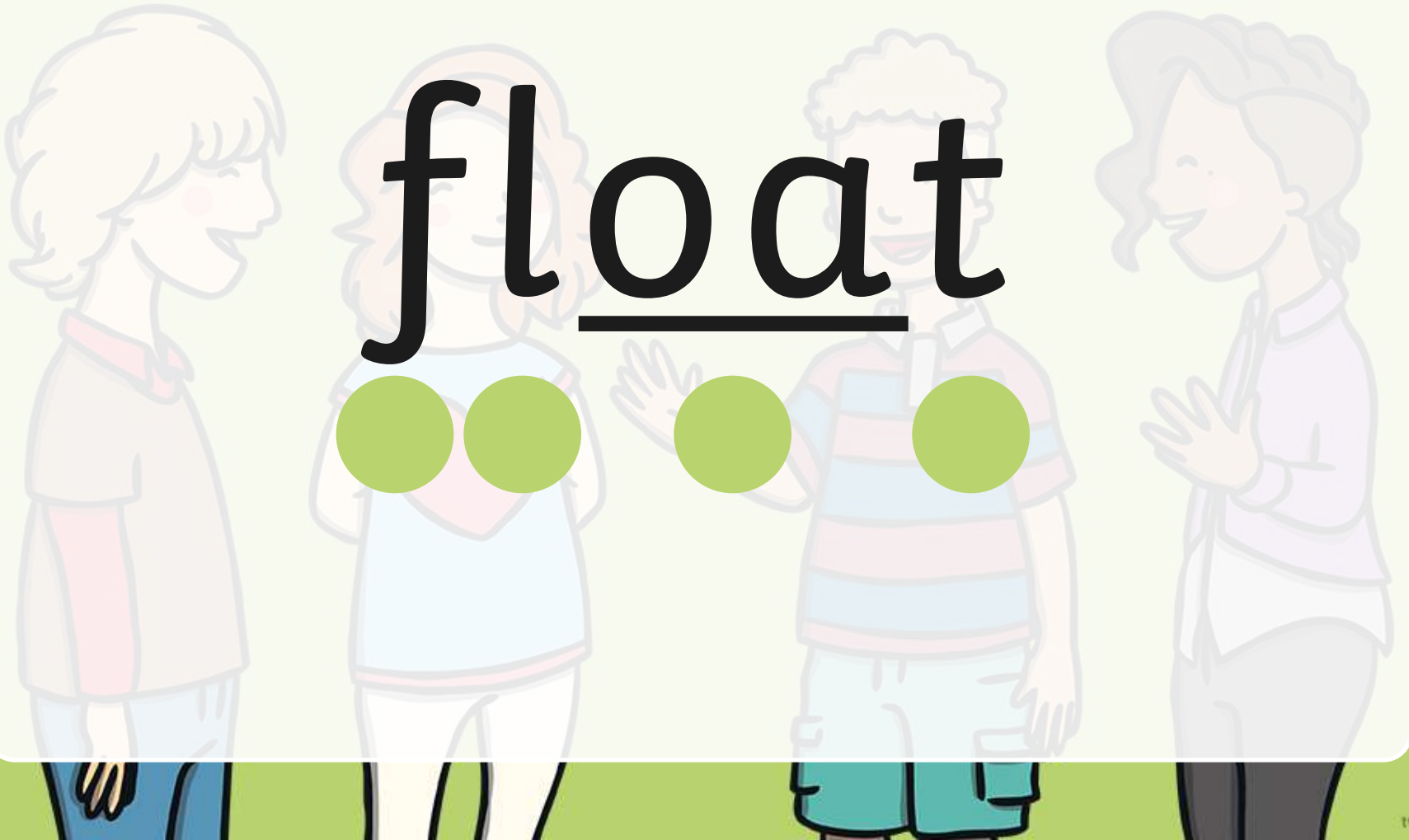
swing



droop



float



smart



groan



brush



growl



scoop



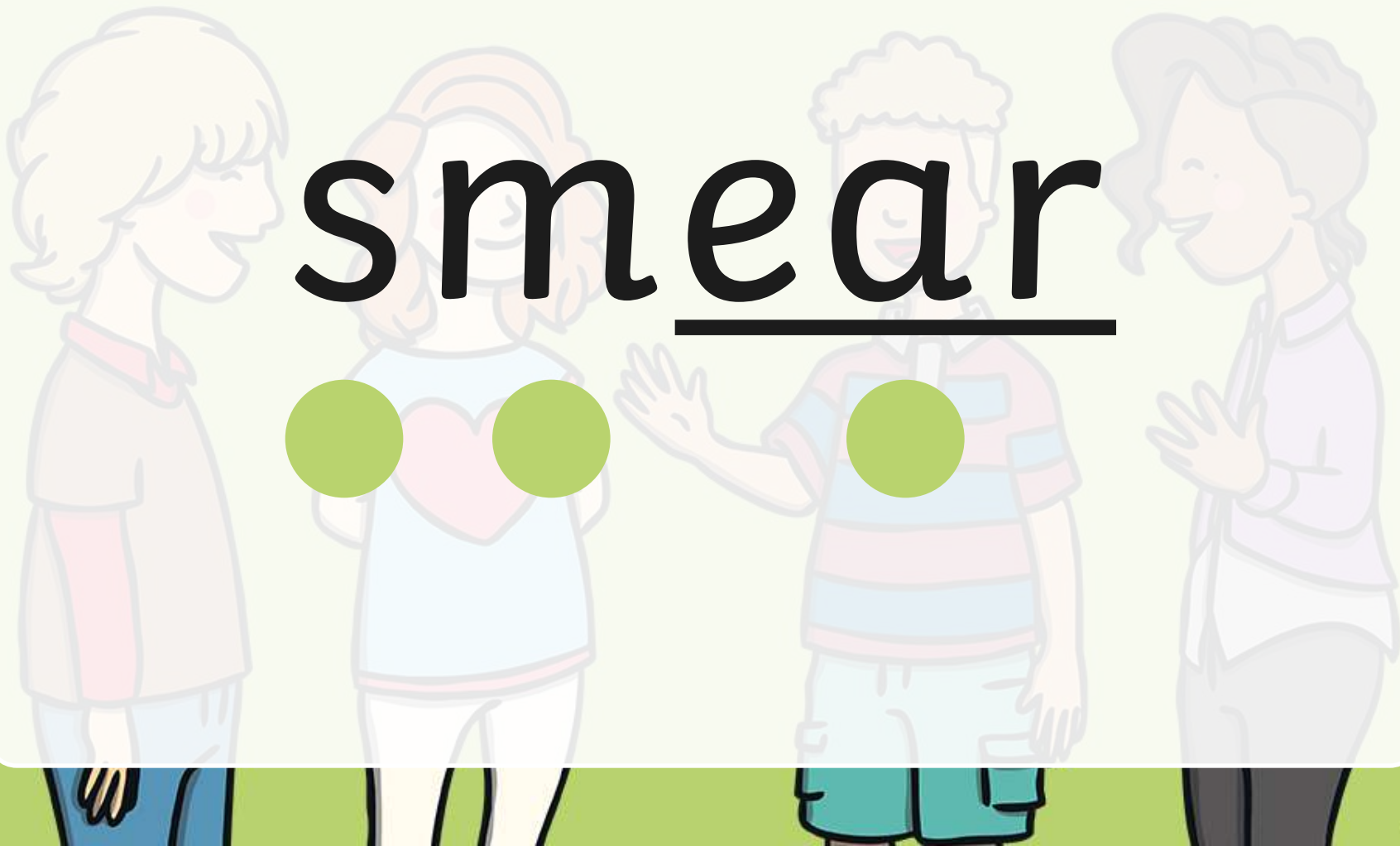
frown



speech



smear



th ill



tree top



starlight



freshness



stand



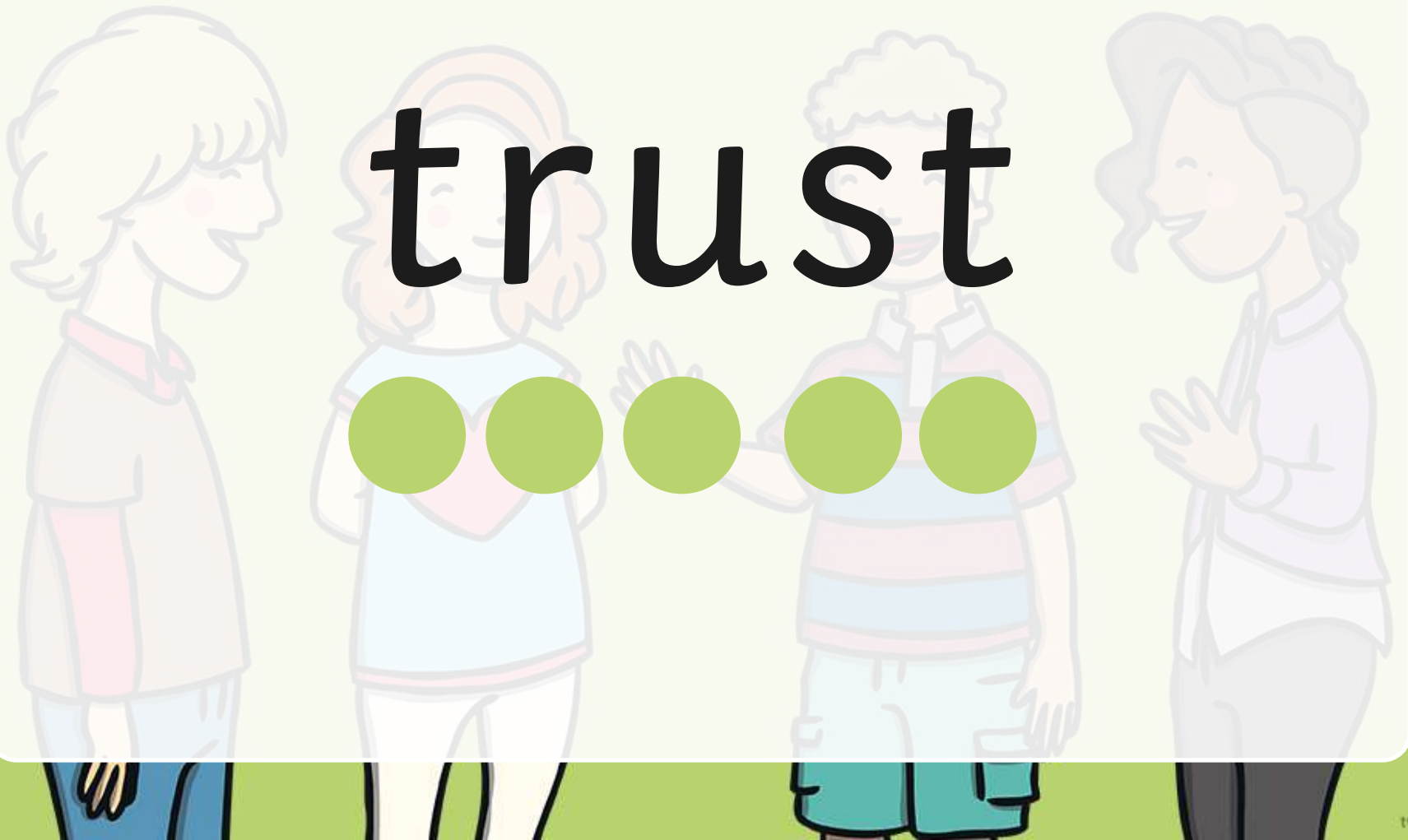
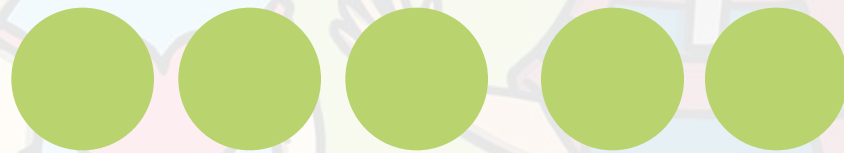
crisp



trend



trust



spend



glint



twist



brand



frost



cramp



plump



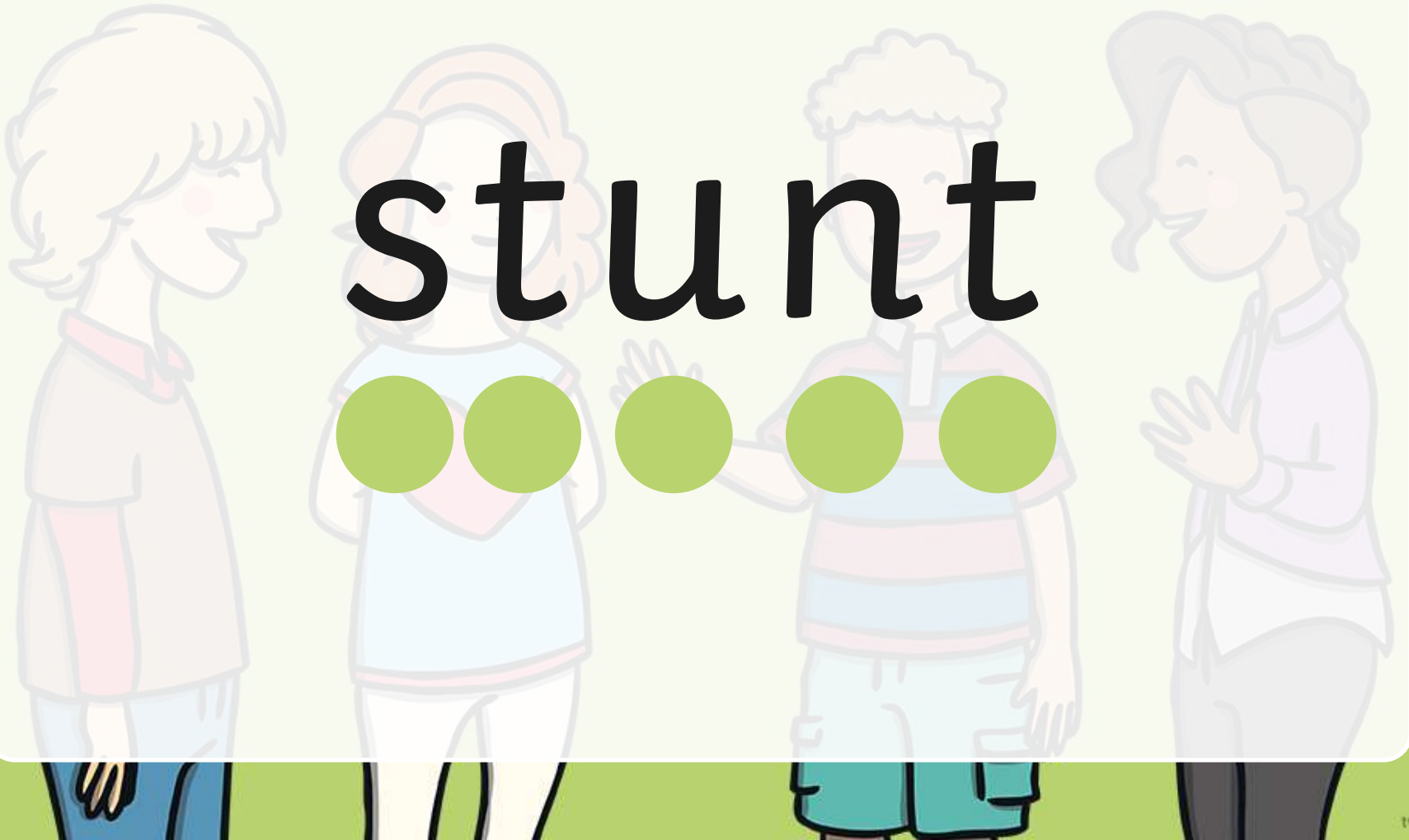
stamp



blend



stunt



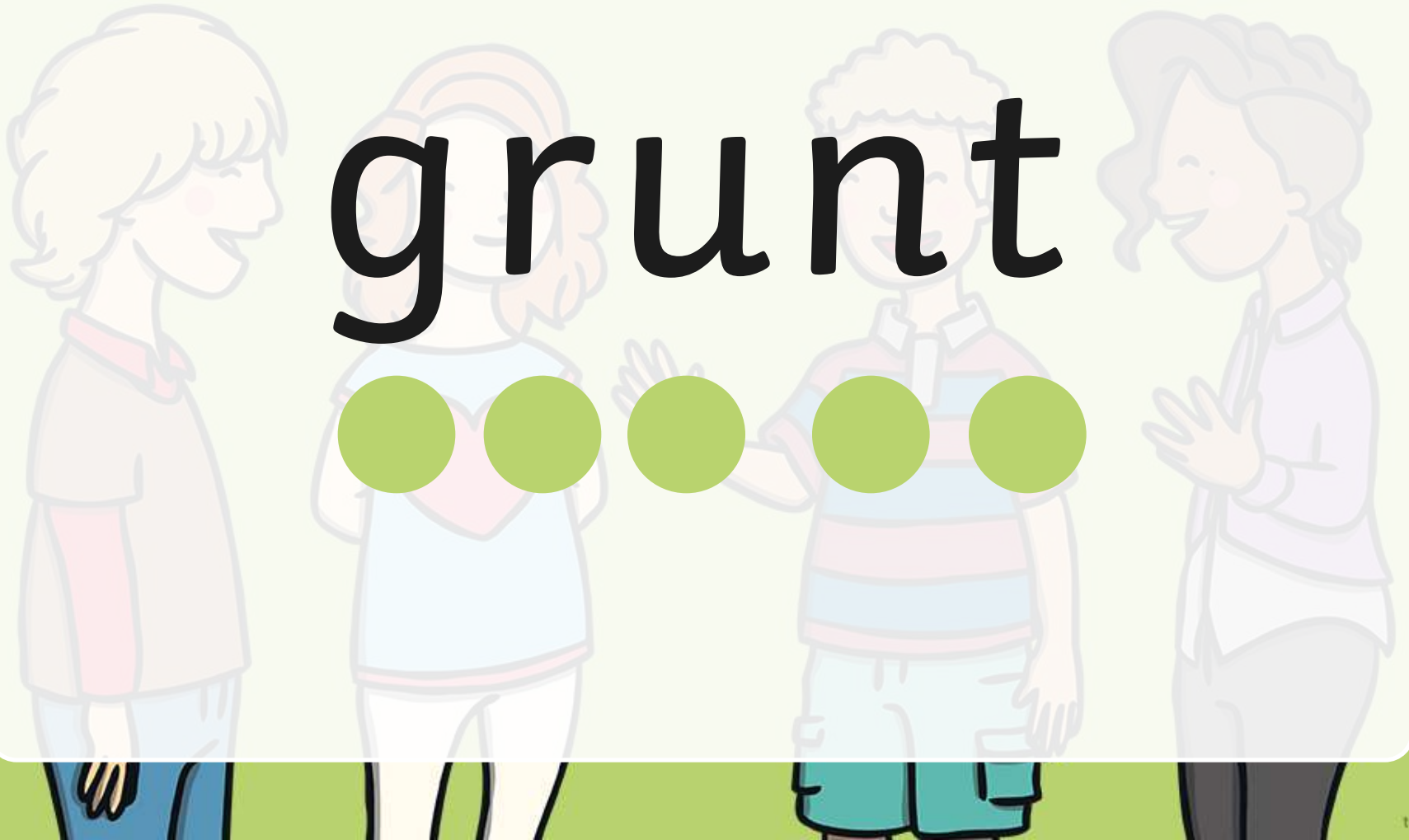
crust



tramp



grunt



crept



drift



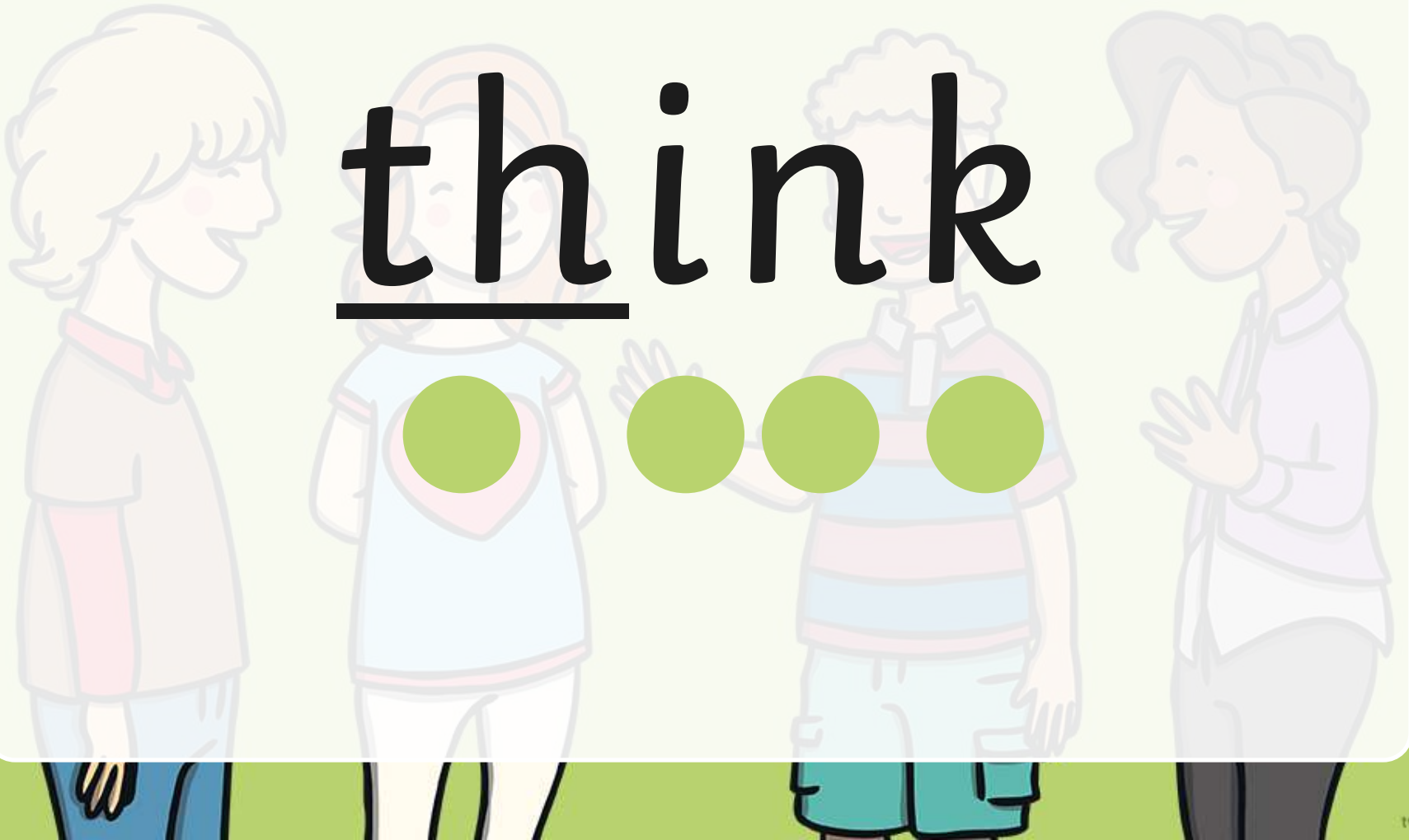
slept



skunk



think



blink



drank



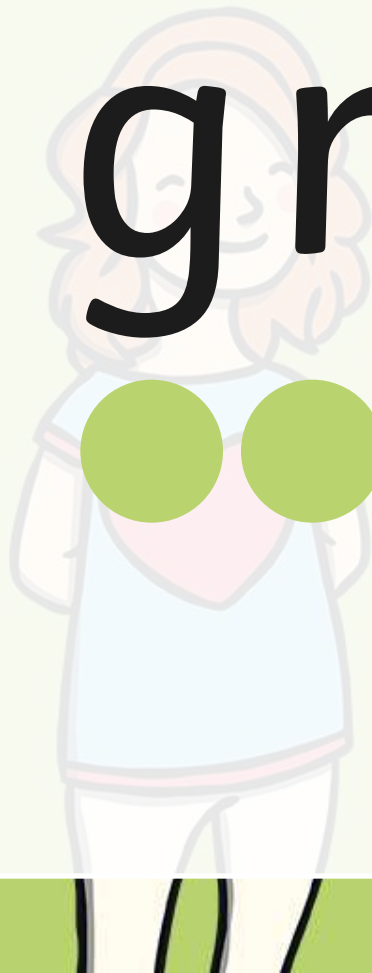
blank



trunk



graft



grant



blast



grasp



slant



The background of the slide features a faint, light-colored illustration of four children standing in a circle. From left to right: a girl with short blonde hair in a brown jacket, a girl with long blonde hair in a blue shirt, a boy with curly blonde hair in a striped shirt, and a girl with long brown hair in a purple shirt. They appear to be in conversation. The word 'crunch' is overlaid in the center in a large, black, lowercase sans-serif font. The letter 'h' has a horizontal line underneath it. Below the word, there are six green circles arranged in a horizontal line, corresponding to the letters: 'c', 'r', 'u', 'n', 'c', and 'h'.

crunch



drench



trench



Grinch



sh r i n k



thrust



spring



strap



string



scrap



street



scrunch



driftwood



twisting





twinkl