

FRIDAY
22/5/2020

JOE WICKS 9:00 - 9:30

- Log onto Joe Wicks on YouTube
- Remember to have a glass of water after you finish



BOOK TALK – ALMA (POSSIBLE RESPONSES)

Pause the film after 20seconds, when you see Alma appearing in the archway.

- 1) How can we describe the weather using similes? *As grey as a / As dingy as... / Miserable like...*
- 2) What is the effect of making everything grey? *We get a sense of the negative intent of the clip.*

Pause as the window image begins to fade – 46seconds

- 3) What does the window look like? *A bit spooky*
- 4) How does the window make the viewer feel? *Miserable/gloomy*

Pause the film when the doll appears behind Alma

- 5) What makes Alma turn round? *The sound*
- 6) What rhetorical question(s) might Alma be asking herself at this point? *How can that doll possibly look like me? Am I imagining this?*
- 7) How would you feel if you turned round and there was a doll who looked exactly like you, standing behind you? *Spooked out! It would be really creepy, but I'd also be curious as to how the doll looked like me.*

BOOK TALK - ALMA

- Use the link to access the film clip, that we started yesterday
- <https://www.literacyshed.com/alma.html>
- Read the question instructions carefully, remembering to pause the video when asked to.
- See the next slide for the questions.



Pause the film at 1min45 when Alma is looking through the window after the doll has disappeared.

- 1) How do you think Alma is feeling now that it has disappeared?
- 2) What advice would you give to Alma?



Pause the film after the door opens itself.

- 3) How does the director SHOW that Alma was frustrated or angry?
- 4) Do you think Alma will go in?



Pause when Alma sees the doll again.

- 5) What is strange about this shop?

Pause when the boy on the tricycle is hitting the door.

- 6) Why do you think the director has included this scene?
- 7) Who is this little boy?

Pause when she reaches her hand towards the doll before she touches its nose.

- 8) Predict what is going to happen next, when she touches the doll.
- 9) What effect does the sound effect have on the mood of the film?

Watch the film until the end.

- 10) What do you think of the end? (see the next slide for some positive/negative ideas that you can select to frame your response)
- 11) Is the doll the next victim? Are all the dolls victims?
- 12) Do you think that they have anything in common?
- 13) What do you think would be a good name for the shop?
- 14) What do you think would be a good name for the shop owner?

POSITIVE	NEGATIVE
Uplifting	disappointing
Magical	wasn't sure where it was heading
Engrossing	a little lack in...
Couldn't take my eyes away from it	it fell short in these areas...
Gripping	couldn't connect with it...
Thrilling	clumsy
Charming	unrealistic
Vivid and realistic development of...	unbelievable
Action packed	boring
Fast-paced	feeling numb and unsure
Thought provoking	underdeveloped characters
In depth study	
Lifts your spirits	

BREAKTIME 10:00 - 10:30

https://www.youtube.com/watch?v=ILBI5KvarD8&list=PLnw_oPgo24bhmqV8Y76iXnwYw9T9AlxbqJ&index=24&t=0s

- Have a good break
- Enjoy your **HEALTHY** snack

Can you do the
challenge I've set for
you?

Blast Off

Home Physical Education

How to play:

- Play with a partner; sibling, parent or carer. Stand 3 – 5 steps apart.
- Players make 10 catches and then swap sides, players make 9 catches then swap sides, players make 8 catches and swap sides continuing this process until they reach 0.
- Can each pair reach 0 without dropping the ball?
- If competing against another pair the first pair to reach 0 are the winners.

Can you encourage your partner even if they make a mistake?

Can you concentrate on your throw and focus on where to aim?

Top Tips

Catching

Are your hands ready creating a target? Spread your fingers and watch the ball into your hands.

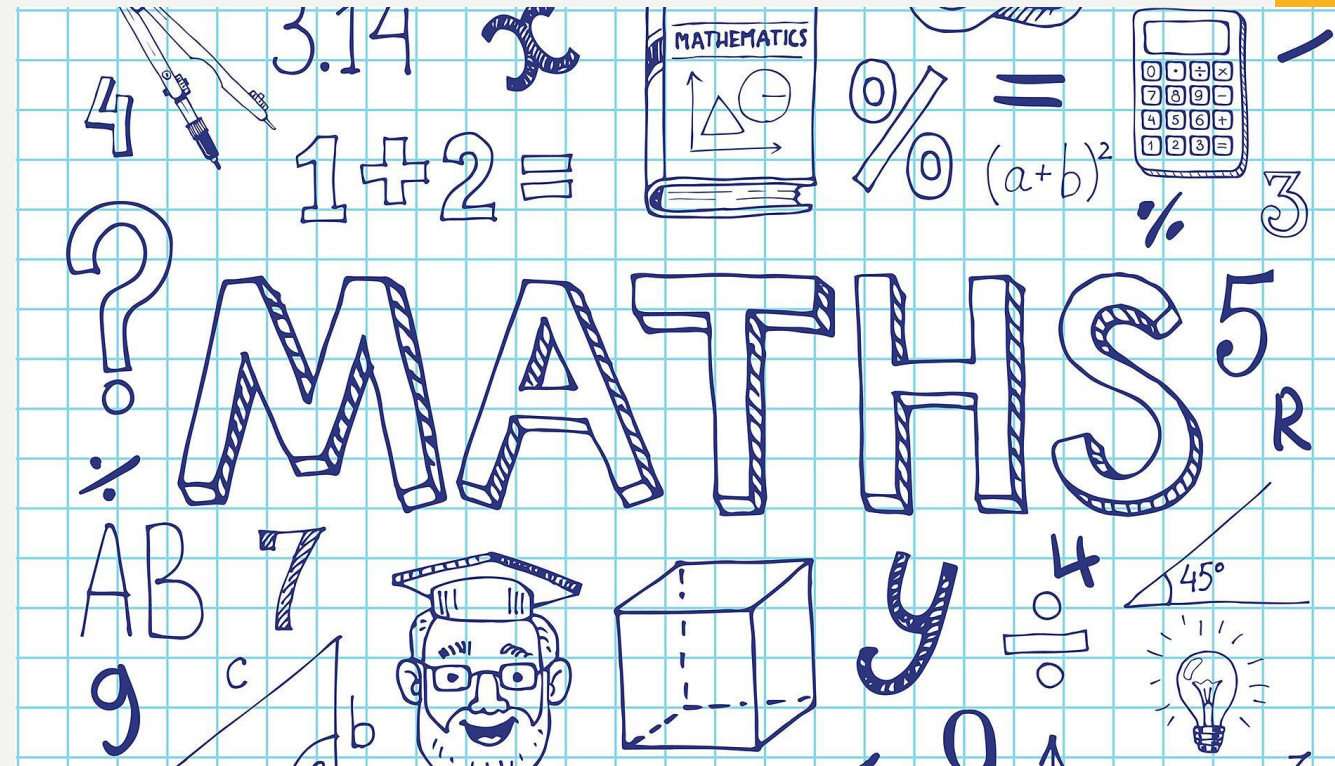
Let's Reflect

If you dropped the ball what did you change?

How did it feel when you dropped the ball and how did you respond?

MATHS 10:30 - 11:15

- SEE THE SEPARATE PPT FOR MATHS.
- REMEMBER TO CLICK ON THE CORRECT YEAR GROUP.



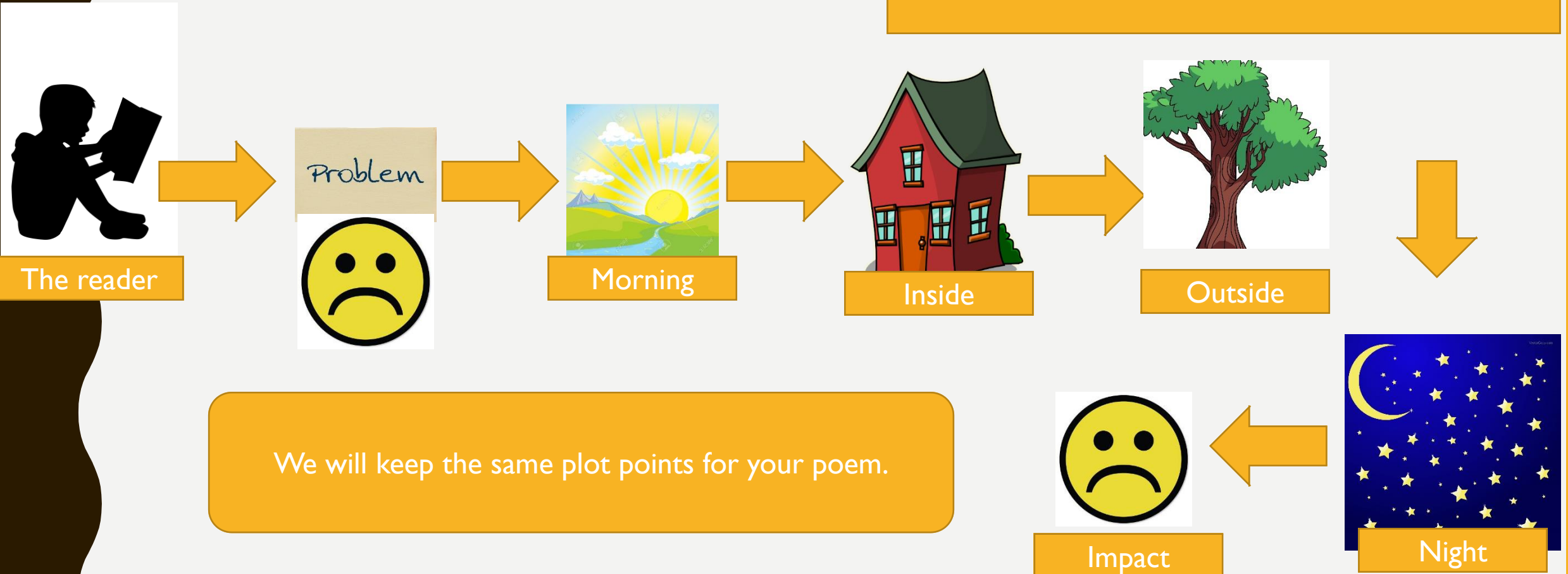
INDEPENDENT WRITE (POETRY)

- Using your plans from yesterday, you are now going to write your poem.
- You will have 10mins to write each stanza. Keep reading your work aloud, as you go to check that the rhythm is right.
- Make sure there are 4 lines to each stanza and that line 2 and 4 rhyme.
- Follow the plot points (see next slide to remind you).

SHAPE OF THE POEM

Today we are going to plan our own poem, based on the Sound Collector by Roger McGough.

Think about what else can be ripped from the us
Love/Happiness
Dreams
Food
Could we link it to the current COVID situation?



LUNCHTIME 12:00 – 1:00

- Enjoy your healthy lunch
- Try your best to get some fresh air.

Can you do the
challenge I've set for
you?

Blast Off

Home Physical Education

Can you encourage your partner even if they make a mistake?

How to play:

- Play with a partner; sibling, parent or carer. Stand 3 – 5 steps apart.
- Players make 10 catches and then swap sides, players make 9 catches then swap sides, players make 8 catches and swap sides continuing this process until they reach 0.
- Can each pair reach 0 without dropping the ball?
- If competing against another pair the first pair to reach 0 are the winners.

Can you concentrate on your throw and focus on where to aim?

Top Tips

Catching

Are your hands ready creating a target? Spread your fingers and watch the ball into your hands.

Let's Reflect

If you dropped the ball what did you change?

How did it feel when you dropped the ball and how did you respond?

WORD OF THE DAY 1:00 - 1:15

STEP 1. RECAP: Begin by recapping one or two words that you are still not secure on. Practise these every day in this recap section until you know them inside out! My group – think how long we recapped ‘believe’ and ‘exercise’ until we cracked these...

STEP 2. WEEKLY RECALL: Recap previous day’s word

STEP 3: LEARN NEW WORD

Day	Miss Holland	Mrs Munton	Miss Neagle	Mr Icke
Monday	invasion	would/wouldn't	group	individual
Tuesday	confusion	could/couldn't	continue	awkward
Wednesday	decision	should/shouldn't	learn	muscle
Thursday	collision	any/many	fruit	government
Friday	television	climb	favourite	parliament

STEP 4: APPLY NEW WORD TO A SENTENCE

COPY OUT YOUR POEM FROM EARLIER TODAY.

- You might want to write these out, adding pictures and different colours.
 - You may want to type this up and decorate.
 - Either way, I'd love to see your poem pictures/copies so please send them to the e-mail address below.
 - c.holland1943@gmail.com
-
- I'm writing mine tomorrow too, so will share it after the half term holidays!

JOURNAL

Can you use
alliteration?

Can you use
repetition?

- Write an entry in your journal for this week (at least a page please!)
- What techniques from your English can you weave into your journal writing?

Can you use a
simile?

Can you use
personification?

Can you use a
metaphor?

TT ROCKSTARS 2:15 - 2:45

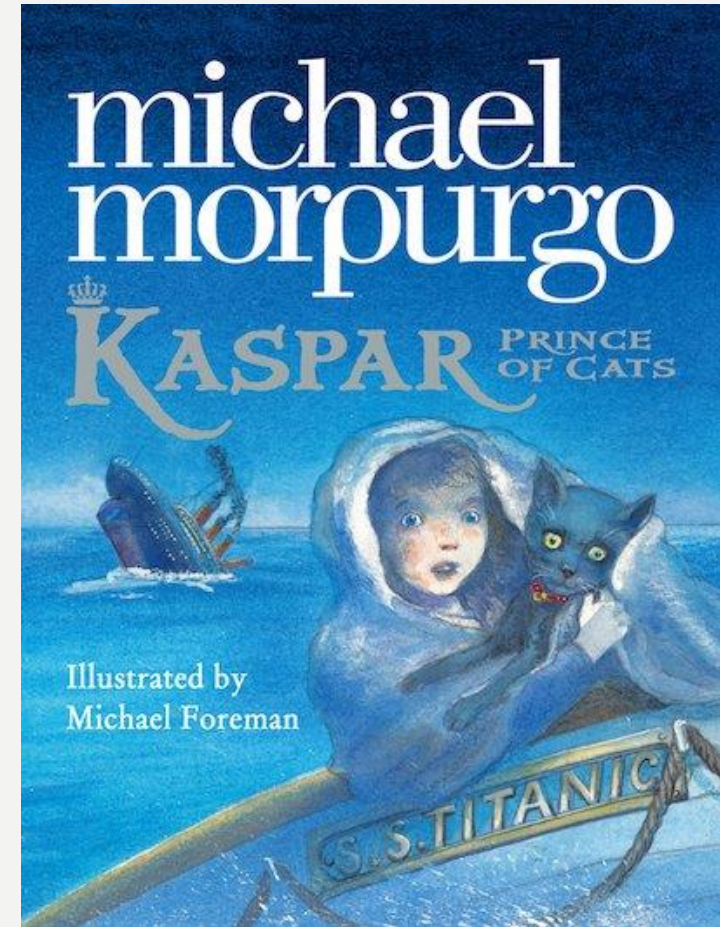
- Can you have a go on garage and Arena to sharpen up your 4x table
- We are continuing to work back through our tables. Please make sure you do this, as I had noticed that 3s and 4s were a bit wobbly before we broke up from school.



INDEPENDENT READING 2:45 - 3:00

My recommended read this week is...

The setting of this story is the Titanic!

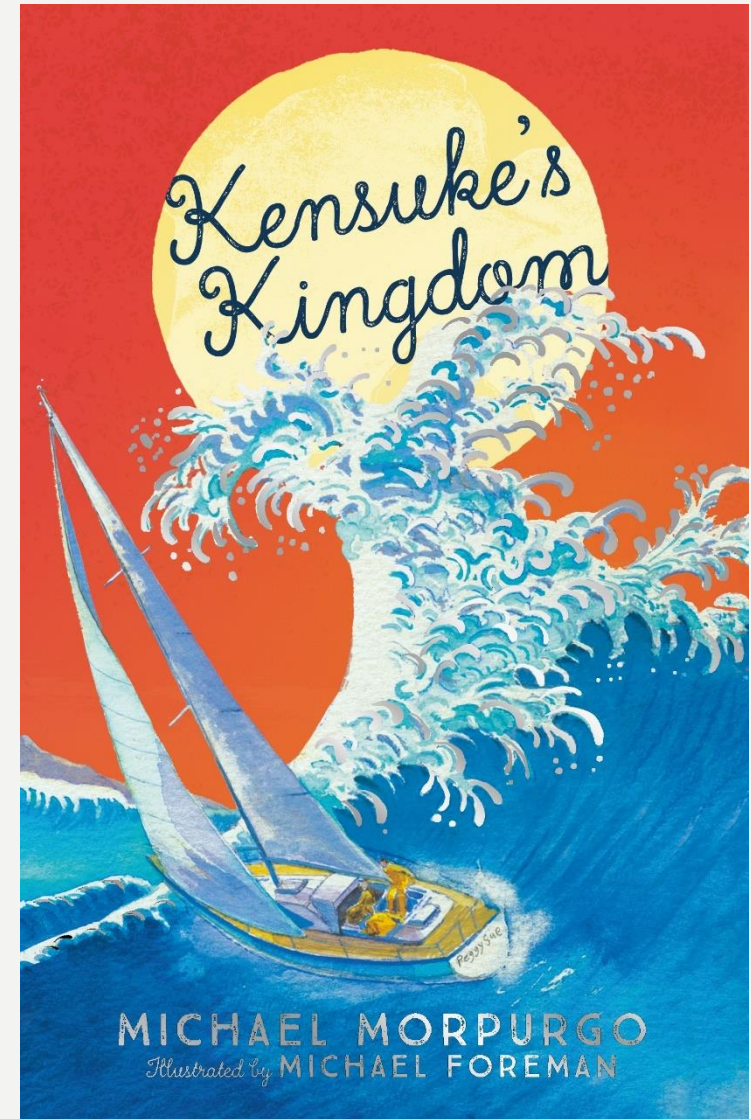


3:00

KENSUKE'S KINGDOM!



Why was Kensuke grinning do you think?



HAPPY HALF TERM

- Have a lovely time at home with your families over the half term week.
 - Home learning will start again after the holidays.
 - Stay safe! Missing you all!
-
- Remember to read and keep working on those times tables over the holidays.