

### Key Writing Focus

- Speech based on Anglo-Saxons
- Non-fiction letter based on Kick
- Narrative – Based on the book Thornhill
- Non-fiction explanation based on Living Things

### Key Maths Focus

- Fractions: equivalent, simplifying, adding, subtracting, multiplying and dividing, mixed numbers
- Fractions of amounts
- Decimals and Percentages
- Algebra
- Measurements

### Art Focus

We are studying the work of Wassily Kandinsky.

- Drawing: blend, direction, shade and tone
  - Painting: technique
- Printing: build up layers and textures

### Reading Focus

- Retrieval and Explanation: retrieving and explaining information from poetry, fiction and non-fiction
- Inference: Fiction and poetry
- Vocabulary: Examining meaning from poetry, fiction and non-fiction

## Sulgrave

Welcome back! Find out about what we are covering during the Spring Term.



### Geography Focus

We are still studying North and South America.

- Studying specific physical features
- Identifying biomes in this region

### Science Focus

- Physics: Forces
- Biology: Living Things

### RE Focus

- What would Jesus do?
- What would make our town more respectful?

### DT Focus

Structures: We are looking at how form structures and will create a structure of our own. We will also look at pulleys alongside our science lessons.

### History Focus

We will study the different crimes and their punishments through history: from the Anglo-Saxon to modern day.

### PSHE Focus

- Celebrating differences
- Dreams and goals

### Music Focus

- Livin' on a Prayer

### PE Focus

- Fitness and REAL PE
- Swimming and Hockey

### Computing Focus

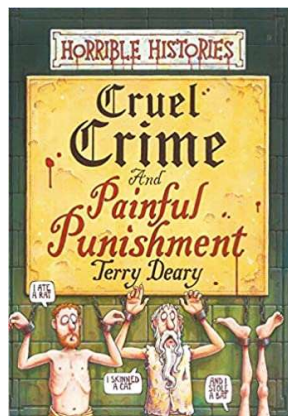
- Technology in our lives
- Multimedia

### Spanish Focus

- Colours, fruits, days, months, Spring time

Spring Term Topic is

## Crime and Punishment



### PE Days

Our PE days are Mondays and Tuesdays. Please ensure your kit is in school at the beginning of each new half term. It will be sent home at the end of each half term to be washed. Please make sure your child has the correct PE kit for the lessons (plain white t-shirt, black shorts, trainers, hair tie for long hair). If the weather is unpleasant then an additional jumper and joggers/leggings maybe worn (for outside PE)

### Extra Home Learning Task

See extra homework tasks sheet which is stuck into your child's homework book.

### How Can You Help at Home?

**Reading:** Every child has a reading record. Every time you read with your child, please can you sign it. It is important that your child reads to you and that you read to your child, as well as your child reading independently. Also, it is requested that a child makes comments in their reading record about what they are reading (once a week minimum).

**Spelling:** In order for children to store spelling learning in their long-term memory, it is important that they over-learn their spellings. So even if your child seems to have grasped their spelling for the week, please continue to spend a few minutes each day on these to ensure that they are not forgotten a few weeks later.

**Maths:** Times Tables Rockstars is an online website that allows your child to practise their times tables in a fun way. Your child has been given a password and username so that they can access the site. Please encourage your child to use the site at least ten minutes every day to secure this learning as it is absolutely crucial for their mathematical development. If your child has forgotten their password, please speak to their class teacher.

**Maths facts:** Each week we will focus on a different mathematical fact. Spend the week learning this really well (instant recall).

**Homework** will go out on a Wednesday and sent in on a Tuesday. Please support your child in finding a quiet area for them to work and please just ask if we can help with anything (before the Tuesday please).

Most of our homework is designed to be carried out in short, sharp chunks daily, rather than in one large chunk. This is more effective for supporting learning and can be done whilst other tasks are taking place, for example, on the walk to school, over breakfast, in the car etc.

### Important Dates

12<sup>th</sup>/13<sup>th</sup> January: Bikeability

21<sup>st</sup> January: Yellow House Charity Day

14<sup>th</sup>-18<sup>th</sup> February: Half Term

21<sup>st</sup> February: Training Day

23<sup>rd</sup>/24<sup>th</sup> March: Parents' Evening